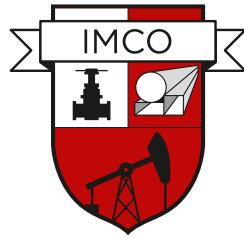


IMCOPIPES FZ LLC



We serve the world



Water Treatment Series

www.imcopipes.com

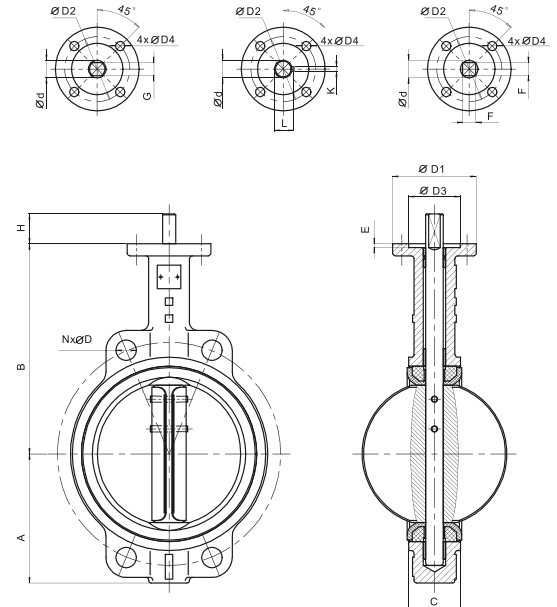
Contents

| | |
|---|-----------|
| Wafer Type Butterfly Valve With Pin | 4 |
| Wafer Type Butterfly Valve With Pinless | 5 |
| Wafer Type Butterfly Valve With Spline Key | 6 |
| Lug Type Butterfly Valve With Pin | 7 |
| Lug Type Butterfly Valve With Pinless | 8 |
| Lug Type Butterfly Valve With Spline Key | 9 |
| U Type Flange Butterfly Valve | 10 |
| Vulcanized Seat Flange Butterfly Valve | 11 |
| Double Eccentric Flange Butterfly Valve | 12 |
| PTFE Lined Butterfly Valve | 13 |
| AWWA Resilient Seat Gate Valve NRS | 15 |
| DIN Resilient Seat Gate Valve NRS | 16 |
| DIN Resilient Seat Gate Valve NRS | 17 |
| DIN Resilient Seat Gate Valve OS&Y | 18 |
| BS Resilient Seat Gate Valve NRS | 19 |
| BS Resilient Seat Gate Valve OS&Y | 20 |
| Socket End Resilient Seat Gate Valve | 21 |
| MSS Metal Seat Gate Valve OS&Y | 22 |
| Knife Gate Valve | 23 |
| MSS Globe Valve | 25 |
| DIN Globe Valve | 26 |
| MSS Swing Check Valve | 28 |
| DIN Swing Check Valve | 29 |
| Dual Plate Check Valve | 30 |
| Single Flap Wafer Check Valve | 31 |
| Flange Type Silent Check Valve | 32 |
| Ball Check Valve | 33 |
| Screw End Ball Check Valve | 34 |
| Ball Valve | 36 |
| Flange End Y Strainer | 37 |
| Rubber Expansion Joint | 38 |
| Rubber Expansion Joint | 39 |

BUTTERFLY VALVE SERIES



Wafer Type Butterfly Valve With Pin



Note:

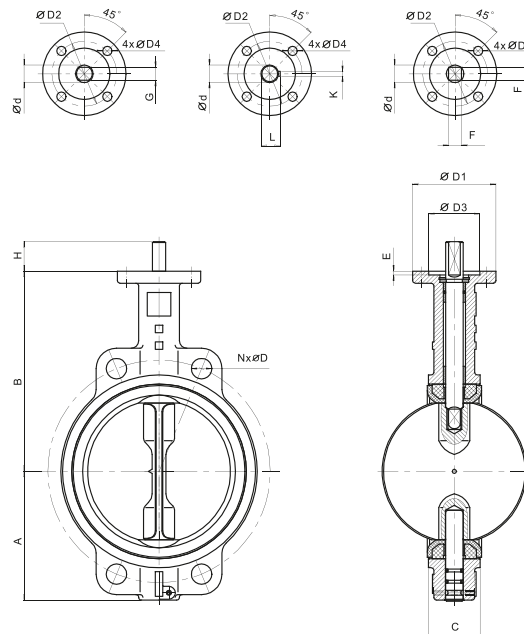
- 1.Design and manufacture: API 609/EN 593/ BS 5155/MSS SP-67.
- 2.Flange dimensions: EN 1092-2/ BS 4504/ASME B16.1.
- 3.Top flange dimensions: ISO 5211.
4. Face to face dimensions: EN 558/ISO 5752/ DIN 3202.
5. Size up to 48".

Materials list:

| | | |
|---|-----------|---|
| 1 | Body | Cast Iron/Ductile Iron/Stainless Steel/Carbon Steel |
| 2 | Disc | Ductile Iron/Stainless Steel/Carbon Steel/Bronze/Coated |
| 3 | Stem | Stainless Steel/Alloy |
| 4 | Seat | EPDM/NBR/VITON/PTFE |
| 5 | Bushing | PTFE/Bronze |
| 6 | Taper Pin | Stainless Steel/Alloy |
| 7 | "O" ring | EPDM/NBR/VITON |

| DN | Dim | A | B | C | ØD1 | ØD2 | ØD3 | 4xØD4 | E | Fx F | G | H | | K | | L | | Ød | |
|-----|-----|-----|-----|--------|-----|-----|-------|--------|---|-------|----|------|------|--------------|-------|------------|-------|-------|-------|
| | | | | | | | | | | | | PN10 | PN16 | PN10 | PN16 | PN10 | PN16 | PN10 | PN16 |
| 40 | | 69 | 136 | 32 | 65 | 50 | 35.25 | 4 x 7 | 4 | 9x9 | 10 | 32 | 3 | 11.2 or 13.8 | | 10 or 12.6 | | | |
| 50 | | 80 | 161 | 42.04 | 65 | 50 | 35.25 | 4 x 7 | 4 | 9x9 | 10 | 32 | 3 | 13.8 | | 12.6 | | | |
| 65 | | 89 | 175 | 44.68 | 65 | 50 | 35.25 | 4 x 7 | 4 | 9x9 | 10 | 32 | 3 | 13.8 | | 12.6 | | | |
| 80 | | 95 | 181 | 45.21 | 65 | 50 | 35.25 | 4 x 7 | 4 | 11x11 | 10 | 32 | 3 | 13.8 | | 12.6 | | | |
| 100 | | 114 | 200 | 52.07 | 90 | 70 | 55.25 | 4 x 10 | 4 | 11x11 | 12 | 32 | 5 | 17.77 | | 15.77 | | | |
| 125 | | 127 | 213 | 54.36 | 90 | 70 | 55.25 | 4 x 10 | 4 | 14x14 | 14 | 32 | 5 | 20.92 | | 18.92 | | | |
| 150 | | 139 | 226 | 55.75 | 90 | 70 | 55.25 | 4 x 10 | 4 | 14x14 | 14 | 32 | 5 | 20.92 | | 18.92 | | | |
| 200 | | 175 | 260 | 60.58 | 125 | 102 | 70.25 | 4 x 12 | 4 | 17x17 | 17 | 40 | 5 | 24.1 | | 22.1 | | | |
| 250 | | 203 | 292 | 65.63 | 125 | 102 | 70.25 | 4 x 12 | 4 | 22x22 | 22 | 40 | 8 | 31.45 | | 28.45 | | | |
| 300 | | 242 | 337 | 76.9 | 125 | 102 | 70.25 | 4 x 12 | 4 | 22x22 | 24 | 40 | 8 | 34.6 | | 31.6 | | | |
| 350 | | 267 | 368 | 75 | 125 | 102 | 70.25 | 4 x 12 | 4 | 22x22 | 24 | 40 | 8 | 34.6 | | 31.6 | | | |
| 400 | | 297 | 400 | 85.7 | 197 | 140 | 100.3 | 4 x 18 | 5 | 27x27 | 27 | 51.2 | 72 | 10 | 36.15 | 40.95 | 33.15 | 37.95 | |
| 450 | | 315 | 422 | 104.6 | 197 | 140 | 100.3 | 4 x 18 | 5 | 27x27 | 27 | 51.2 | 72 | 10 | 12 | 40.95 | 45.86 | 37.95 | 42.86 |
| 500 | | 348 | 480 | 130.28 | 197 | 140 | 100.3 | 4 x 18 | 5 | 36x36 | 32 | 64.2 | 82 | 10 | 12 | 44.12 | 48.72 | 41.12 | 45.72 |
| 600 | | 444 | 562 | 151.36 | 276 | 165 | 130.3 | 4 x 23 | 6 | 36x36 | 36 | 70.2 | 82 | 16 | 54.62 | 57.98 | 50.62 | 53.98 | |

Wafer Type Butterfly Valve With Pinless



Note:

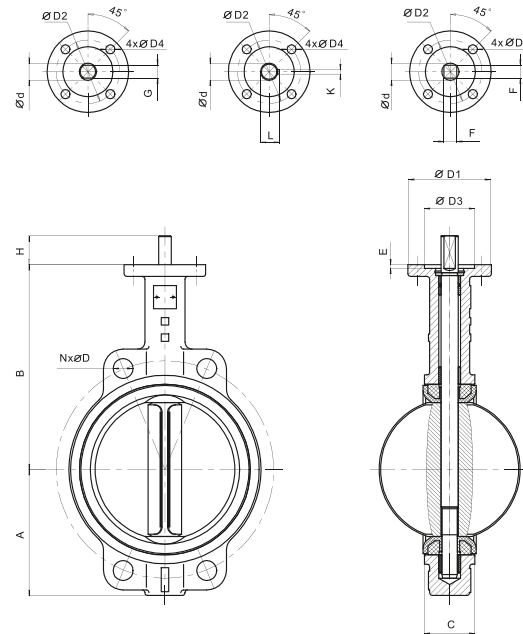
- 1.Design and manufacture: API 609/EN 593/BS 5155/MSS SP-67.
- 2.Flange dimensions: EN 1092-2/BS 4504/ASME B16.1.
- 3.Top flange dimensions: ISO 5211.
- 4.Face to face dimensions: EN 558/ISO 5752/DIN 3202.
- 5.Size up to 36".

Materials list:

| | | |
|---|----------|---|
| 1 | Body | Cast Iron/Ductile Iron/Stainless Steel/Carbon Steel |
| 2 | Disc | Ductile Iron/Stainless Steel/Carbon Steel/Bronze/Coated |
| 3 | Stem | Stainless Steel/Alloy |
| 4 | Seat | EPDM/NBR/VITON/PTFE |
| 5 | Bushing | PTFE/Bronze |
| 6 | "O" ring | EPDM/NBR/VITON |

| DN \ Dim | A | B | C | ΦD1 | ΦD2 | ΦD3 | 4xΦD4 | E | FxF | G | H | K | L | Φd |
|----------|-----|-----|--------|-----|-----|-------|--------|---|-------|----|------|----|-------|------------|
| 40 | 69 | 136 | 32 | 65 | 50 | 35.25 | 4 x 7 | 4 | 9x9 | 10 | 32 | 3 | 11.2 | 10 or 12.6 |
| 50 | 80 | 156 | 42.04 | 65 | 50 | 35.25 | 4 x 7 | 4 | 9x9 | 10 | 32 | 3 | 13.8 | 12.6 |
| 65 | 89 | 162 | 44.68 | 65 | 50 | 35.25 | 4 x 7 | 4 | 9x9 | 10 | 32 | 3 | 13.8 | 12.6 |
| 80 | 95 | 170 | 45.21 | 65 | 50 | 35.25 | 4 x 7 | 4 | 11x11 | 10 | 32 | 3 | 13.8 | 12.6 |
| 100 | 114 | 185 | 52.07 | 90 | 70 | 55.25 | 4 x 10 | 4 | 11x11 | 12 | 32 | 5 | 17.77 | 15.77 |
| 125 | 127 | 207 | 54.36 | 90 | 70 | 55.25 | 4 x 10 | 4 | 14x14 | 14 | 32 | 5 | 20.92 | 18.92 |
| 150 | 139 | 216 | 55.75 | 90 | 70 | 55.25 | 4 x 10 | 4 | 14x14 | 14 | 32 | 5 | 20.92 | 18.92 |
| 200 | 175 | 256 | 60.58 | 125 | 102 | 70.25 | 4 x 12 | 4 | 17x17 | 17 | 40 | 5 | 24.1 | 22.1 |
| 250 | 203 | 248 | 65.63 | 125 | 102 | 70.25 | 4 x 12 | 4 | 22x22 | 22 | 40 | 8 | 31.45 | 28.45 |
| 300 | 242 | 280 | 76.9 | 125 | 102 | 70.25 | 4 x 12 | 4 | 22x22 | 24 | 40 | 8 | 34.6 | 31.6 |
| 350 | 267 | 368 | 75 | 125 | 102 | 70.25 | 4 x 12 | 4 | 22x22 | 24 | 40 | 8 | 34.6 | 31.6 |
| 400 | 297 | 400 | 85.7 | 197 | 140 | 100.3 | 4 x 18 | 5 | 27x27 | 27 | 51.2 | 10 | 36.15 | 33.15 |
| 450 | 315 | 422 | 104.6 | 197 | 140 | 100.3 | 4 x 18 | 5 | 27x27 | 27 | 51.2 | 10 | 40.95 | 37.95 |
| 500 | 348 | 480 | 130.28 | 197 | 140 | 100.3 | 4 x 18 | 5 | 36x36 | 32 | 64.2 | 10 | 44.12 | 41.12 |
| 600 | 444 | 562 | 151.36 | 276 | 165 | 130.3 | 4 x 23 | 6 | 36x36 | 36 | 70.2 | 16 | 54.62 | 50.62 |

Wafer Type Butterfly Valve With Spline Key



Note:

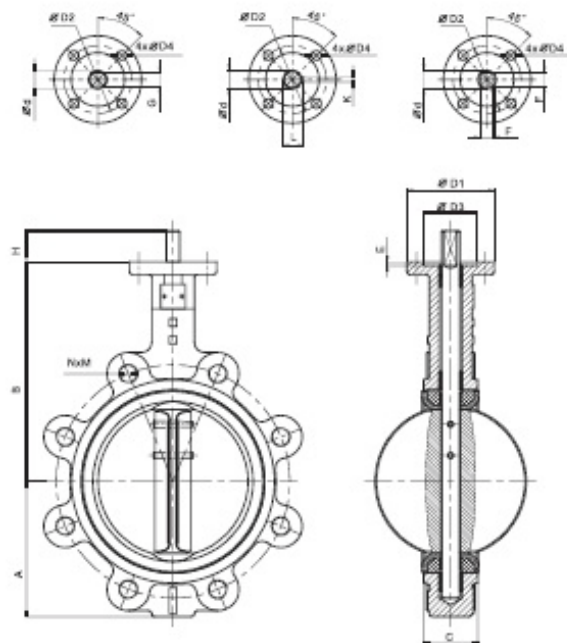
1. Design and manufacture: API 609/EN 593/BS 5155/MSS SP-67.
2. Flange dimensions: EN 1092-2/BS 4504/ASME B16.1.
3. Top flange dimensions: ISO 5211 .
4. Face to face dimensions: EN 558/ISO 5752/ DIN 3202.
5. Size up to 24".

Materials list:

| | | |
|---|----------|---|
| 1 | Body | Cast Iron/Ductile Iron/Stainless Steel/Carbon Steel |
| 2 | Disc | Ductile Iron/Stainless Steel/Carbon Steel/Bronze/Coated |
| 3 | Stem | Stainless Steel/Alloy |
| 4 | Seat | EPDM/NBR/VITON/PTFE |
| 5 | Bushing | PTFE/Bronze |
| 6 | "O" ring | EPDM/NBR/VITON |

| DN \ Dim | A | B | C | ΦD1 | ΦD2 | ΦD3 | 4xΦD4 | E | FxF | G | H | K | L | Φd |
|----------|-----|-----|-------|-----|-----|-------|--------|---|-------|----|----|---|-------|-------|
| 40 | 69 | 136 | 32 | 65 | 50 | 35.25 | 4 x 7 | 4 | 9x9 | 10 | 32 | 3 | 13.8 | 12.6 |
| 50 | 80 | 161 | 42.04 | 65 | 50 | 35.25 | 4 x 7 | 4 | 9x9 | 10 | 32 | 3 | 13.8 | 12.6 |
| 65 | 89 | 175 | 44.68 | 65 | 50 | 35.25 | 4 x 7 | 4 | 9x9 | 10 | 32 | 3 | 13.8 | 12.6 |
| 80 | 95 | 181 | 45.21 | 65 | 50 | 35.25 | 4 x 7 | 4 | 11x11 | 10 | 32 | 3 | 13.8 | 12.6 |
| 100 | 114 | 200 | 52.07 | 90 | 70 | 55.25 | 4 x 10 | 4 | 11x11 | 12 | 32 | 5 | 17.77 | 15.77 |
| 125 | 127 | 213 | 54.36 | 90 | 70 | 55.25 | 4 x 10 | 4 | 14x14 | 14 | 32 | 5 | 20.92 | 18.92 |
| 150 | 139 | 226 | 55.75 | 90 | 70 | 55.25 | 4 x 10 | 4 | 14x14 | 14 | 32 | 5 | 20.92 | 18.92 |
| 200 | 175 | 260 | 60.58 | 125 | 102 | 70.25 | 4 x 12 | 4 | 17x17 | 17 | 40 | 5 | 24.1 | 22.1 |
| 250 | 203 | 292 | 65.63 | 125 | 102 | 70.25 | 4 x 12 | 4 | 22x22 | 22 | 40 | 8 | 31.45 | 28.45 |
| 300 | 242 | 337 | 76.9 | 125 | 102 | 70.25 | 4 x 12 | 4 | 22x22 | 24 | 40 | 8 | 34.6 | 31.6 |

Lug Type Butterfly Valve With Pin



Note:

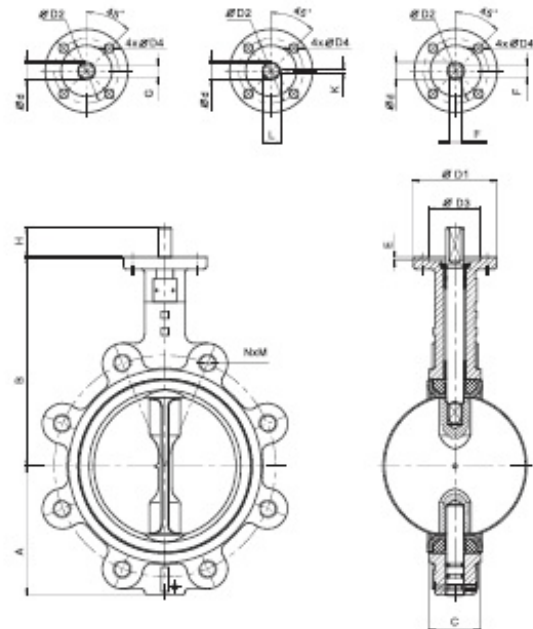
- 1.Design and manufacture: API 609/EN 593/BS 5155/MSS SP-67.
- 2.Flange dimensions: EN 1092-2/BS 4504/ ASME B16.1.
- 3.Top flange dimensions: ISO 5211.
- 4.Face to face dimensions: EN 558/ISO 5752/ DIN 3202.
- 5.Size up to 48".

Materials list:

| | | |
|---|-----------|---|
| 1 | Body | Cast Iron/Ductile Iron/Stainless Steel/Carbon Steel |
| 2 | Disc | Ductile Iron/Stainless Steel/Carbon Steel/Bronze/Coated |
| 3 | Stem | Stainless Steel/Alloy |
| 4 | Seat | EPDM/NBR/VITON/PTFE |
| 5 | Bushing | PTFE/Bronze |
| 6 | Taper Pin | Stainless Steel/Alloy |
| 7 | "O" ring | EPDM/NBR/VITON |

| DN | Dim | A | B | C | ΦD1 | ΦD2 | ΦD3 | 4xΦD4 | E | Fx F | G | H | | K | | L | | Φd | |
|-----|-----|-----|--------|-----|-----|-------|--------|-------|-------|------|------|------|--------------|------------|-------|-------|-------|-------|------|
| | | | | | | | | | | | | PN10 | PN16 | PN10 | PN16 | PN10 | PN16 | PN10 | PN16 |
| 40 | 69 | 136 | 32 | 65 | 50 | 35.25 | 4 x 7 | 4 | 9x9 | 10 | 32 | 3 | 11.2 or 13.8 | 10 or 12.6 | | | | | |
| 50 | 80 | 161 | 42.04 | 65 | 50 | 35.25 | 4 x 7 | 4 | 9x9 | 10 | 32 | 3 | 13.8 | 12.6 | | | | | |
| 65 | 89 | 175 | 44.68 | 65 | 50 | 35.25 | 4 x 7 | 4 | 9x9 | 10 | 32 | 3 | 13.8 | 12.6 | | | | | |
| 80 | 95 | 181 | 45.21 | 65 | 50 | 35.25 | 4 x 7 | 4 | 11x11 | 10 | 32 | 3 | 13.8 | 12.6 | | | | | |
| 100 | 114 | 200 | 52.07 | 90 | 70 | 55.25 | 4 x 10 | 4 | 11x11 | 12 | 32 | 5 | 17.77 | 15.77 | | | | | |
| 125 | 127 | 213 | 54.36 | 90 | 70 | 55.25 | 4 x 10 | 4 | 14x14 | 14 | 32 | 5 | 20.92 | 18.92 | | | | | |
| 150 | 139 | 226 | 55.75 | 90 | 70 | 55.25 | 4 x 10 | 4 | 14x14 | 14 | 32 | 5 | 20.92 | 18.92 | | | | | |
| 200 | 175 | 260 | 60.58 | 125 | 102 | 70.25 | 4 x 12 | 4 | 17x17 | 17 | 40 | 5 | 24.1 | 22.1 | | | | | |
| 250 | 203 | 292 | 65.63 | 125 | 102 | 70.25 | 4 x 12 | 4 | 22x22 | 22 | 40 | 8 | 31.45 | 28.45 | | | | | |
| 300 | 242 | 337 | 76.9 | 125 | 102 | 70.25 | 4 x 12 | 4 | 22x22 | 24 | 40 | 8 | 34.6 | 31.6 | | | | | |
| 350 | 267 | 368 | 75 | 125 | 102 | 70.25 | 4 x 12 | 4 | 22x22 | 24 | 40 | 8 | 34.6 | 31.6 | | | | | |
| 400 | 297 | 400 | 85.7 | 197 | 140 | 100.3 | 4 x 18 | 5 | 27x27 | 27 | 51.2 | 72 | 10 | 36.15 | 40.95 | 33.15 | 37.95 | | |
| 450 | 315 | 422 | 104.6 | 197 | 140 | 100.3 | 4 x 18 | 5 | 27x27 | 27 | 51.2 | 72 | 10 | 12 | 40.95 | 45.86 | 37.95 | 42.86 | |
| 500 | 348 | 480 | 130.28 | 197 | 140 | 100.3 | 4 x 18 | 5 | 36x36 | 32 | 64.2 | 82 | 10 | 12 | 44.12 | 48.72 | 41.12 | 45.72 | |
| 600 | 444 | 562 | 151.36 | 276 | 165 | 130.3 | 4 x 23 | 6 | 36x36 | 36 | 70.2 | 82 | 16 | | 54.62 | 57.98 | 50.62 | 53.98 | |

Lug Type Butterfly Valve With Pinless



Note:

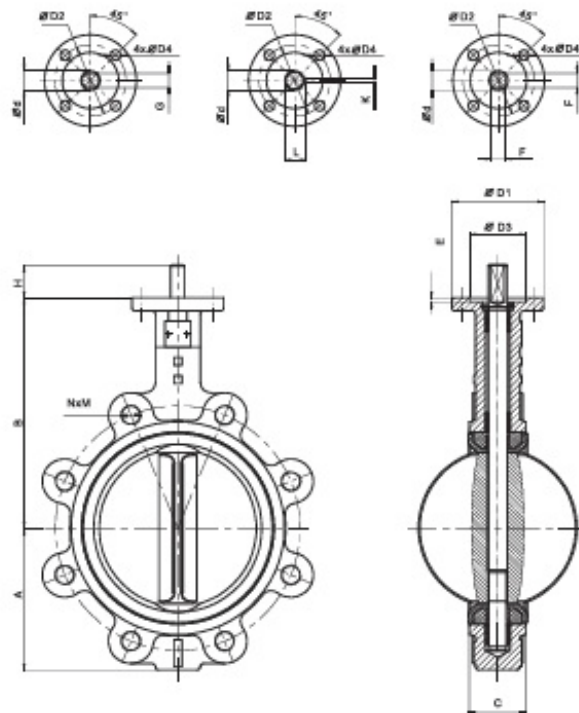
1. Design and manufacture: API 609/EN 593/BS 5155/MSS SP-67.
2. Flange dimensions: EN 1092-2/BS 4504/ASME B16.1.
3. Top flange dimensions: ISO 5211.
4. Face to face dimensions: EN 558/ISO 5752/ DIN 3202.
5. Size up to 36".

Materials list:

| | | |
|---|----------|---|
| 1 | Body | Cast Iron/Ductile Iron/Stainless Steel/Carbon Steel |
| 2 | Disc | Ductile Iron/Stainless Steel/Carbon Steel/Bronze/Coated |
| 3 | Stem | Stainless Steel/Alloy |
| 4 | Seat | EPDM/NBR/VITON/PTFE |
| 5 | Bushing | PTFE/Bronze |
| 6 | "O" ring | EPDM/NBR/VITON |

| DN \ Dim | A | B | C | $\Phi D1$ | $\Phi D2$ | $\Phi D3$ | 4x $\Phi D4$ | E | FxF | G | H | K | L | Φd |
|----------|-----|-----|--------|-----------|-----------|-----------|--------------|---|-------|----|------|----|-------|------------|
| 40 | 69 | 136 | 32 | 65 | 50 | 35.25 | 4 x 7 | 4 | 9x9 | 10 | 32 | 3 | 11.2 | 10 or 12.6 |
| 50 | 80 | 161 | 42.04 | 65 | 50 | 35.25 | 4 x 7 | 4 | 9x9 | 10 | 32 | 3 | 13.8 | 12.6 |
| 65 | 89 | 175 | 44.68 | 65 | 50 | 35.25 | 4 x 7 | 4 | 9x9 | 10 | 32 | 3 | 13.8 | 12.6 |
| 80 | 95 | 181 | 45.21 | 65 | 50 | 35.25 | 4 x 7 | 4 | 11x11 | 10 | 32 | 3 | 13.8 | 12.6 |
| 100 | 114 | 200 | 52.07 | 90 | 70 | 55.25 | 4 x 10 | 4 | 11x11 | 12 | 32 | 5 | 17.77 | 15.77 |
| 125 | 127 | 213 | 54.36 | 90 | 70 | 55.25 | 4 x 10 | 4 | 14x14 | 14 | 32 | 5 | 20.92 | 18.92 |
| 150 | 139 | 226 | 55.75 | 90 | 70 | 55.25 | 4 x 10 | 4 | 14x14 | 14 | 32 | 5 | 20.92 | 18.92 |
| 200 | 175 | 260 | 60.58 | 125 | 102 | 70.25 | 4 x 12 | 4 | 17x17 | 17 | 40 | 5 | 24.1 | 22.1 |
| 250 | 203 | 292 | 65.63 | 125 | 102 | 70.25 | 4 x 12 | 4 | 22x22 | 22 | 40 | 8 | 31.45 | 28.45 |
| 300 | 242 | 337 | 76.9 | 125 | 102 | 70.25 | 4 x 12 | 4 | 22x22 | 24 | 40 | 8 | 34.6 | 31.6 |
| 350 | 267 | 368 | 75 | 125 | 102 | 70.25 | 4 x 12 | 4 | 22x22 | 24 | 40 | 8 | 34.6 | 31.6 |
| 400 | 297 | 400 | 85.7 | 197 | 140 | 100.3 | 4 x 18 | 5 | 27x27 | 27 | 51.2 | 10 | 36.15 | 33.15 |
| 450 | 315 | 422 | 104.6 | 197 | 140 | 100.3 | 4 x 18 | 5 | 27x27 | 27 | 51.2 | 10 | 40.95 | 37.95 |
| 500 | 348 | 480 | 130.28 | 197 | 140 | 100.3 | 4 x 18 | 5 | 36x36 | 32 | 64.2 | 10 | 44.12 | 41.12 |
| 600 | 444 | 562 | 151.36 | 276 | 165 | 130.3 | 4 x 23 | 6 | 36x36 | 36 | 70.2 | 16 | 54.62 | 50.62 |

Lug Type Butterfly Valve With Spline Key



Note:

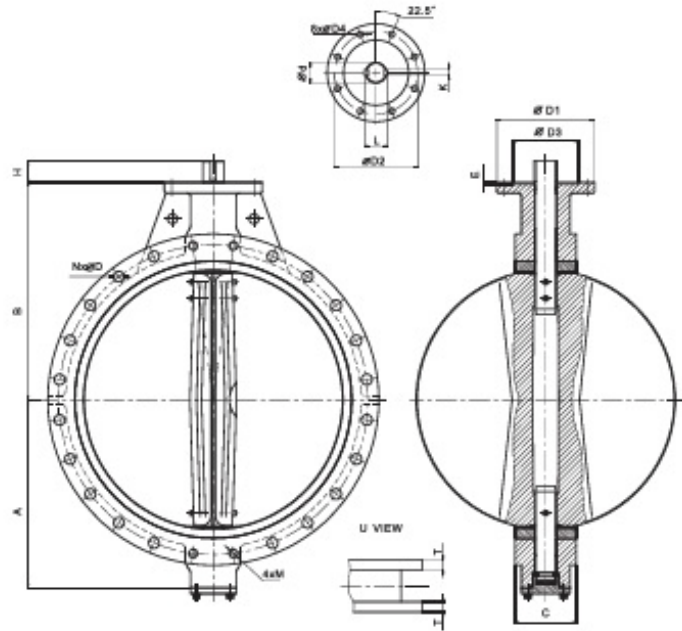
1. Design and manufacture: API 609/EN 593/BS 5155/MSS SP-67.
2. Flange dimensions: EN 1092-2/BS 4504/ASME B16.1.
3. Top flange dimensions: ISO 5211.
4. Face to face dimensions: EN 558/ISO 5752/DIN 3202.
5. Size up to 24".

Materials list:

| | | |
|---|----------|---|
| 1 | Body | Cast Iron/Ductile Iron/Stainless Steel/Carbon Steel |
| 2 | Disc | Ductile Iron/Stainless Steel/Carbon Steel/Bronze/Coated |
| 3 | Stem | Stainless Steel/Alloy |
| 4 | Seat | EPDM/NBR/VITON/PTFE |
| 5 | Bushing | PTFE/Bronze |
| 6 | "O" ring | EPDM/NBR/VITON |

| DN \ Dim | A | B | C | ØD1 | ØD2 | ØD3 | 4xØD4 | E | FxF | G | H | K | L | Ød |
|----------|-----|-----|-------|-----|-----|-------|--------|---|-------|----|----|---|-------|-------|
| 40 | 69 | 136 | 32 | 65 | 50 | 35.25 | 4 x 7 | 4 | 9x9 | 10 | 32 | 3 | 13.8 | 12.6 |
| 50 | 80 | 161 | 42.04 | 65 | 50 | 35.25 | 4 x 7 | 4 | 9x9 | 10 | 32 | 3 | 13.8 | 12.6 |
| 65 | 89 | 175 | 44.68 | 65 | 50 | 35.25 | 4 x 7 | 4 | 9x9 | 10 | 32 | 3 | 13.8 | 12.6 |
| 80 | 95 | 181 | 45.21 | 65 | 50 | 35.25 | 4 x 7 | 4 | 11x11 | 10 | 32 | 3 | 13.8 | 12.6 |
| 100 | 114 | 200 | 52.07 | 90 | 70 | 55.25 | 4 x 10 | 4 | 11x11 | 12 | 32 | 5 | 17.77 | 15.77 |
| 125 | 127 | 213 | 54.36 | 90 | 70 | 55.25 | 4 x 10 | 4 | 14x14 | 14 | 32 | 5 | 20.92 | 18.92 |
| 150 | 139 | 226 | 55.75 | 90 | 70 | 55.25 | 4 x 10 | 4 | 14x14 | 14 | 32 | 5 | 20.92 | 18.92 |
| 200 | 175 | 260 | 60.58 | 125 | 102 | 70.25 | 4 x 12 | 4 | 17x17 | 17 | 40 | 5 | 24.1 | 22.1 |
| 250 | 203 | 292 | 65.63 | 125 | 102 | 70.25 | 4 x 12 | 4 | 22x22 | 22 | 40 | 8 | 31.45 | 28.45 |
| 300 | 242 | 337 | 76.9 | 125 | 102 | 70.25 | 4 x 12 | 4 | 22x22 | 24 | 40 | 8 | 34.6 | 31.6 |

U Type Flange Butterfly Valve



Note:

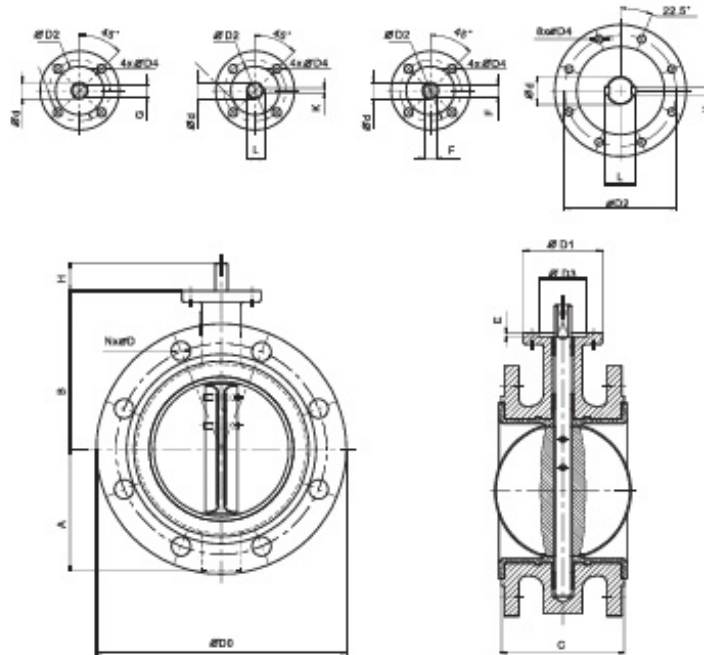
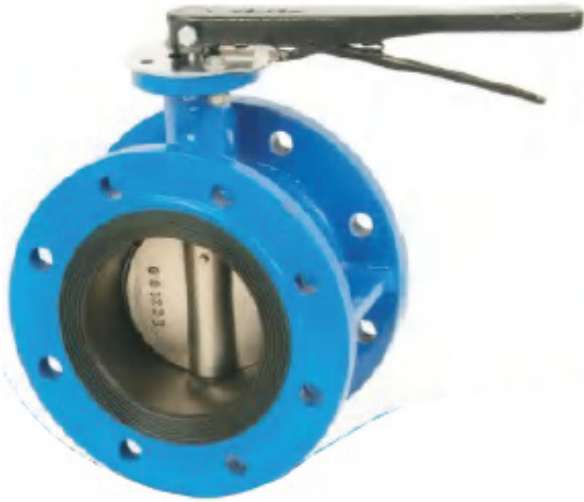
- 1.Design and manufacture: API 609/EN 593/ BS 5155.
- 2.Flange dimensions: EN 1092-2/ASME B16.1.
- 3.Top flange dimensions: ISO 5211.
- 4.Face to face dimensions: EN 558/ISO 5752/ DIN 3202.
- 5.Size up to 72".

Materials list:

| | | |
|---|-----------|---|
| 1 | Body | Cast Iron/Ductile Iron/Stainless Steel/Carbon Steel |
| 2 | Disc | Ductile Iron/Stainless Steel/Carbon Steel/Bronze/Coated |
| 3 | Stem | Stainless Steel/Alloy |
| 4 | Seat | EPDM/NBR/VITON/PTFE |
| 5 | Bushing | PTFE/Bronze |
| 6 | Taper Pin | Stainless Steel/Alloy |
| 7 | "O" ring | EPDM/NBR/VITON |

| DN \ Dim | A | B | C | ΦD1 | ΦD2 | ΦD3 | 8xΦD4 | E | H | K | L | L | Φd |
|----------|-----|-----|-----|-----|-----|-------|--------|---|-----|----|-------|----|-------|
| 700 | 512 | 629 | 165 | 300 | 254 | 200.3 | 8 x 18 | 6 | 66 | 18 | 71.35 | 54 | 63.35 |
| 800 | 576 | 666 | 188 | 300 | 254 | 200.3 | 8 x 18 | 6 | 66 | 18 | 71.35 | 60 | 63.35 |
| 900 | 636 | 720 | 203 | 300 | 254 | 200.3 | 8 x 18 | 6 | 118 | 20 | 84 | 60 | 75 |
| 1000 | 700 | 800 | 216 | 300 | 254 | 200.3 | 8 x 18 | 6 | 142 | 22 | 95 | 60 | 85 |
| 1200 | 844 | 940 | 276 | 350 | 298 | 230.3 | 8 x 22 | 6 | 150 | 28 | 117 | 70 | 105 |

Vulcanized Seat Flange Butterfly Valve



Note:

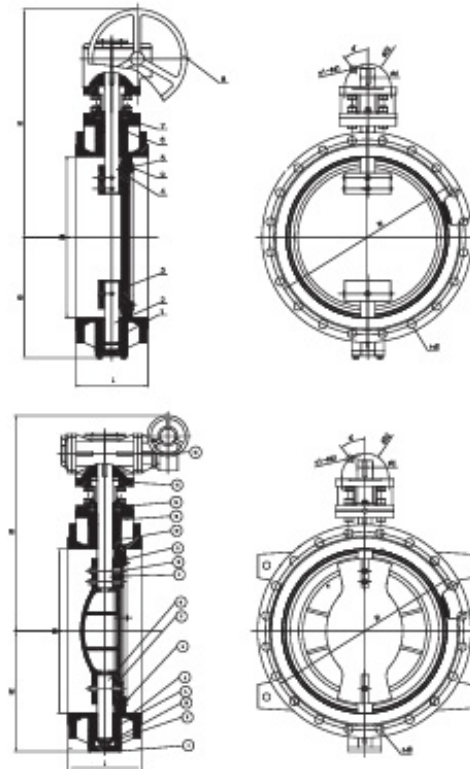
- 1.Design and manufacture: API 609/EN 593/AWWA C504.
- 2.Flange dimensions: EN 1092-2/ASME B16.1.
- 3.Top flange dimensions: ISO 5211.
- 4.Face to face dimensions: EN 558/ISO 5752/DIN 3202.
- 5.Size up to 96".

Materials list:

| | | |
|---|----------|-----------------------------|
| 1 | Body | Cast iron/Ductile iron |
| 2 | Disc | Ductile iron/Al Bronze/S.S. |
| 3 | Stem | Stainless steel |
| 4 | Seat | NBR/EPDM |
| 5 | Bushing | PTFE/Al Bronze |
| 6 | "O" ring | NBR/EPDM |

| DN | Dim | A | B | C | ΦD1 | ΦD2 | ΦD3 | 4xΦD4 | E | FxF | G | H | | K | | L | | Φd | | | |
|------|-----|-----|-----|-----|-----|-----|-------|--------|---|-------|----|------|------|-------|-------|-------|-------|-------|-------|--|--|
| | | | | | | | | | | | | PN10 | PN16 | PN10 | PN16 | PN10 | PN16 | PN10 | PN16 | | |
| 50 | | 80 | 110 | 108 | 65 | 50 | 35.25 | 4 x 7 | 4 | 9x9 | 10 | 32 | 3 | 13.8 | 12.6 | | | | | | |
| 65 | | 80 | 134 | 112 | 65 | 50 | 35.25 | 4 x 7 | 4 | 9x9 | 10 | 32 | 3 | 13.8 | 12.6 | | | | | | |
| 80 | | 95 | 131 | 114 | 65 | 50 | 35.25 | 4 x 7 | 4 | 11x11 | 10 | 32 | 3 | 13.8 | 12.6 | | | | | | |
| 100 | | 114 | 150 | 127 | 90 | 70 | 55.25 | 4 x 10 | 4 | 11x11 | 12 | 32 | 5 | 17.77 | 15.77 | | | | | | |
| 125 | | 113 | 170 | 140 | 90 | 70 | 55.25 | 4 x 10 | 4 | 14x14 | 14 | 32 | 5 | 20.92 | 18.92 | | | | | | |
| 150 | | 139 | 180 | 140 | 90 | 70 | 55.25 | 4 x 10 | 4 | 14x14 | 14 | 32 | 5 | 20.92 | 18.92 | | | | | | |
| 200 | | 175 | 210 | 152 | 125 | 102 | 70.25 | 4 x 12 | 4 | 17x17 | 17 | 40 | 5 | 24.1 | 22.1 | | | | | | |
| 250 | | 213 | 245 | 165 | 125 | 102 | 70.25 | 4 x 12 | 4 | 22x22 | 22 | 40 | 8 | 31.45 | 28.45 | | | | | | |
| 300 | | 242 | 276 | 178 | 125 | 102 | 70.25 | 4 x 12 | 4 | 22x22 | 24 | 40 | 8 | 34.6 | 31.6 | | | | | | |
| 350 | | 254 | 310 | 190 | 125 | 102 | 70.25 | 4 x 12 | 4 | 22x22 | 24 | 40 | 8 | 34.6 | 31.6 | | | | | | |
| 400 | | 278 | 340 | 216 | 197 | 140 | 100.3 | 4 x 18 | 5 | 27x27 | 27 | 51.2 | 72 | 10 | 36.15 | 40.95 | 33.15 | 37.95 | | | |
| 450 | | 320 | 375 | 222 | 197 | 140 | 100.3 | 4 x 18 | 5 | 27x27 | 27 | 51.2 | 72 | 10 | 12 | 40.95 | 45.86 | 37.95 | 42.86 | | |
| 500 | | 329 | 430 | 229 | 197 | 140 | 100.3 | 4 x 18 | 5 | 36x36 | 32 | 64.2 | 82 | 10 | 12 | 44.12 | 48.72 | 41.12 | 45.72 | | |
| 600 | | 384 | 500 | 267 | 276 | 165 | 130.3 | 4 x 23 | 6 | 36x36 | 36 | 70.2 | 82 | 16 | | 54.62 | 57.98 | 50.62 | 53.98 | | |
| 700 | | 450 | 560 | 292 | 300 | 254 | 200.3 | 8 x 18 | 6 | \ | \ | 66 | \ | 18 | \ | 71.35 | \ | 63.35 | \ | | |
| 800 | | 501 | 620 | 318 | 300 | 254 | 200.3 | 8 x 18 | 6 | \ | \ | 66 | \ | 18 | \ | 71.35 | \ | 63.35 | \ | | |
| 900 | | 550 | 685 | 330 | 300 | 254 | 200.3 | 8 x 18 | 6 | \ | \ | 118 | \ | 20 | \ | 84 | \ | 75 | \ | | |
| 1000 | | 622 | 735 | 410 | 300 | 254 | 200.3 | 8 x 18 | 6 | \ | \ | 142 | \ | 22 | \ | 95 | \ | 85 | \ | | |
| 1200 | | 763 | 917 | 470 | 350 | 298 | 230.3 | 8 x 22 | 6 | \ | \ | 150 | \ | 28 | \ | 117 | \ | 105 | \ | | |

Double Eccentric Flange Butterfly Valve



Note:

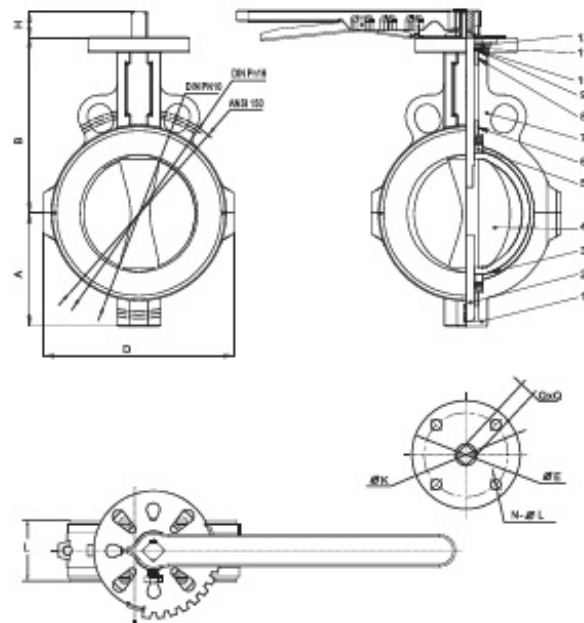
- 1.Design and manufacture: EN 593/BS 5155/ AWWA C504.
- 2.Flange dimensions: EN 1092-2/ASME B16.1.
- 3.Top flange dimensions: ISO 5211.
- 4.Face to face dimensions: EN 558/ISO 5752/DIN 3202.
- 5.Size up to 120".

Materials list:

| | | |
|---|---------|-----------------------------|
| 1 | Body | Cast iron/Ductile iron |
| 2 | Disc | Ductile iron/Al Bronze/S.S. |
| 3 | Seat | Bronze/Stainless steel |
| 4 | Stem | Stainless steel |
| 5 | Bushing | PTFE/Al Bronze |

| DN | H1 | H2 | D1 | | | N-d0 | | | L |
|------|------|-----|------|------|------|-------|-------|-------|-----|
| | | | PN10 | PN16 | PN25 | PN10 | PN16 | PN25 | |
| 100 | 280 | 122 | 180 | 180 | 190 | 8-19 | 8-19 | 8-23 | 190 |
| 150 | 345 | 160 | 240 | 240 | 250 | 8-23 | 8-23 | 8-27 | 210 |
| 200 | 395 | 218 | 295 | 295 | 310 | 8-23 | 12-23 | 12-27 | 230 |
| 250 | 445 | 222 | 350 | 355 | 370 | 12-23 | 12-28 | 12-30 | 250 |
| 300 | 605 | 275 | 400 | 410 | 430 | 12-23 | 12-28 | 16-30 | 270 |
| 350 | 710 | 318 | 460 | 470 | 490 | 16-23 | 16-28 | 16-33 | 290 |
| 400 | 745 | 355 | 515 | 525 | 550 | 16-28 | 16-31 | 16-36 | 310 |
| 450 | 816 | 385 | 565 | 585 | 600 | 20-28 | 20-31 | 20-36 | 330 |
| 500 | 860 | 430 | 620 | 650 | 660 | 20-28 | 20-34 | 20-36 | 350 |
| 600 | 930 | 450 | 725 | 770 | 770 | 20-31 | 20-37 | 20-39 | 390 |
| 700 | 1050 | 535 | 840 | 840 | 875 | 24-31 | 24-37 | 24-42 | 430 |
| 800 | 1160 | 590 | 950 | 950 | 990 | 24-34 | 24-40 | 24-48 | 470 |
| 900 | 1220 | 645 | 1050 | 1050 | 1090 | 28-34 | 28-40 | 28-48 | 510 |
| 1000 | 1330 | 730 | 1160 | 1170 | 1210 | 28-37 | 28-43 | 28-56 | 550 |
| 1200 | 1480 | 840 | 1380 | 1390 | 1420 | 32-40 | 32-49 | 32-56 | 630 |

PTFE Lined Butterfly Valve



Note:

1. Design and manufacture: API 609/EN 593/ BS 5155/MSS SP-67.
2. Flange dimensions: EN 1092-2/BS 4504/ASME B16.1.
3. Top flange dimensions: ISO 5211.
4. Face to face dimensions: EN 558/ISO 5752/DIN 3202.
5. Size up to 24".

Materials list:

| | | |
|---|-----------------|--------------|
| 1 | Body | Ductile Iron |
| 2 | Shaft | SS316 |
| 3 | Seat | PTFE+EPDM |
| 4 | Disc | CF8M+PTFE |
| 5 | Pressing Sleeve | FRP |
| 6 | Shaft Sleeve | FRP |

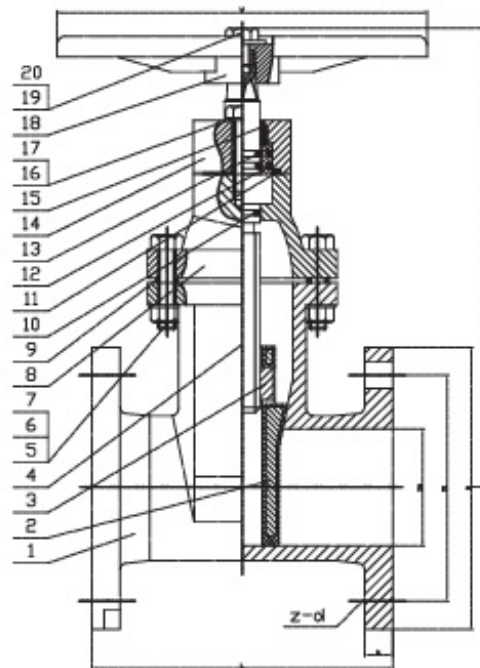
| | | |
|----|-------------------|--------------|
| 7 | Body | Ductile Iron |
| 8 | Shaft Sleeve | FRP |
| 9 | Cushion | Steel |
| 10 | Circlip For Shaft | Steel |
| 11 | Cusion | Steel |
| 12 | Circlip For Hole | Steel |

| DN | A | B | C | L | H | UPPER FLANGE | | | QXQ | ANSI 150 | | PN10 | | PN16 | |
|-----|-----|-----|-----|------|----|--------------|-----|-------|-----|----------|-------|------|-------|------|-------|
| | | | | | | K | E | N-oL | | n6 | n-nd | n6 | n-nd | n6 | n-nd |
| 50 | 62 | 136 | 112 | 47 | 32 | 65 | 50 | 4-M6 | 9 | 120.5 | 4-19 | 125 | 4-19 | 125 | 4-19 |
| 65 | 70 | 138 | 126 | 50 | 32 | 65 | 50 | 4-M6 | 9 | 139.5 | 4-19 | 145 | 4-19 | 145 | 4-19 |
| 80 | 78 | 140 | 143 | 50 | 32 | 65 | 50 | 4-M6 | 9 | 152.5 | 4-19 | 160 | 4-19 | 160 | 8- |
| 100 | 105 | 158 | 168 | 55.5 | 32 | 90 | 70 | 4-M8 | 11 | 190.5 | 8-19 | 180 | 8-19 | 190 | 8- |
| 125 | 120 | 175 | 200 | 59 | 32 | 90 | 70 | 4-M8 | 14 | 216 | 8-22 | 210 | 8-19 | 210 | 8-19 |
| 150 | 140 | 185 | 230 | 59 | 32 | 90 | 70 | 4-M8 | 14 | 241.5 | 8-22 | 240 | 8-23 | 240 | 8-23 |
| 200 | 168 | 235 | 282 | 63 | 32 | 125 | 102 | 4-M10 | 17 | 298.5 | 8-22 | 295 | 8-23 | 295 | 12-23 |
| 250 | 200 | 270 | 340 | 73 | 32 | 125 | 102 | 4-M10 | 22 | 362 | 12-25 | 350 | 12-23 | 355 | 12-28 |
| 300 | 235 | 305 | 395 | 81 | 32 | 125 | 102 | 4-M10 | 22 | 432 | 12-25 | 400 | 12-23 | 410 | 12-28 |

GATE VALVE SERIES



AWWA Resilient Seat Gate Valve NRS



Note:

1. Design and manufacture: AWWA C515/C509.
2. Flange dimensions: ASME B16.1.
3. Face to face dimensions: ASME B16.10.
4. Fusion bonded epoxy coating inside and outside.
5. Size up to 36".

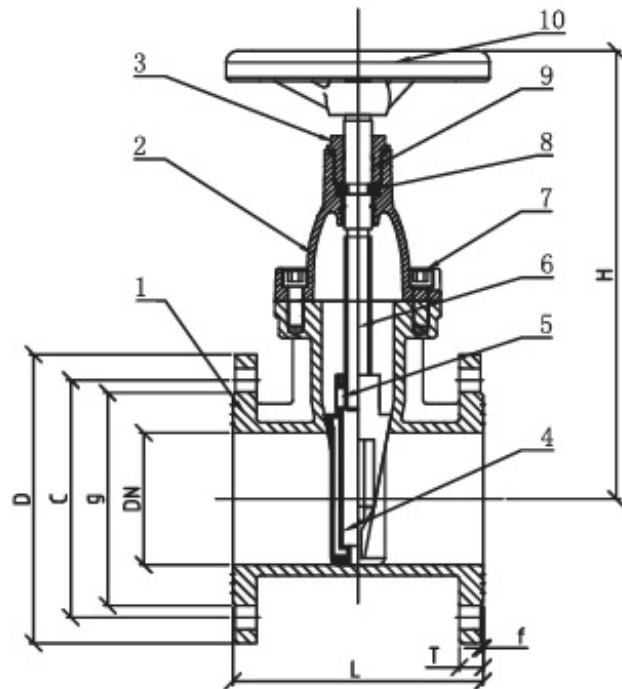
Materials list:

| | | |
|----|-------------|----------------|
| 1 | Body | ASTM A536 |
| 2 | Wedge | ASTM A536+EPDM |
| 3 | Stem Nut | ASTM B62 |
| 4 | Stem | ASTM B16 |
| 5 | Bonnet Bolt | S.S.304 |
| 6 | Nut | S.S.304 |
| 7 | Washer | S.S.304 |
| 8 | Bonnet | ASTM A536 |
| 9 | Gasket | ASTM D 2000 |
| 10 | O-Ring | ASTM D 2000 |

| | | |
|----|-----------|-------------|
| 11 | Minipad | ASTM D 2000 |
| 12 | O-Ring | ASTM D 2000 |
| 13 | Seal Ring | ASTM B16 |
| 14 | Gland | ASTM A536 |
| 15 | Dust Ring | ASTM D 2000 |
| 16 | Washer | S.S.304 |
| 17 | Bolt | S.S.304 |
| 18 | Wheel | ASTM A307 |
| 19 | Nut | S.S.304 |
| 20 | Washer | S.S.304 |

| DN | D | D1 | L | b | H | Z-d | W |
|-----|-----|-------|-----|------|------|-------|-----|
| 50 | 152 | 120.5 | 178 | 16 | 258 | 4-19 | 200 |
| 65 | 178 | 139.5 | 190 | 17.5 | 266 | 4-19 | 200 |
| 80 | 191 | 152.5 | 203 | 19 | 301 | 4-19 | 250 |
| 100 | 229 | 190.5 | 229 | 24 | 345 | 8-19 | 280 |
| 125 | 254 | 216 | 254 | 24 | 395 | 8-22 | 320 |
| 150 | 279 | 241.5 | 267 | 25.5 | 444 | 8-22 | 320 |
| 200 | 343 | 298.5 | 292 | 29 | 522 | 8-22 | 350 |
| 250 | 406 | 362 | 330 | 30 | 604 | 12-25 | 400 |
| 300 | 483 | 432 | 356 | 32 | 705 | 12-25 | 450 |
| 350 | 533 | 476 | 381 | 35 | 769 | 12-29 | 600 |
| 400 | 597 | 539.5 | 406 | 37 | 854 | 16-29 | 600 |
| 500 | 699 | 635 | 457 | 43 | 1010 | 20-32 | 800 |
| 600 | 813 | 749.5 | 508 | 48 | 1164 | 20-35 | 800 |

DIN Resilient Seat Gate Valve NRS



Note:

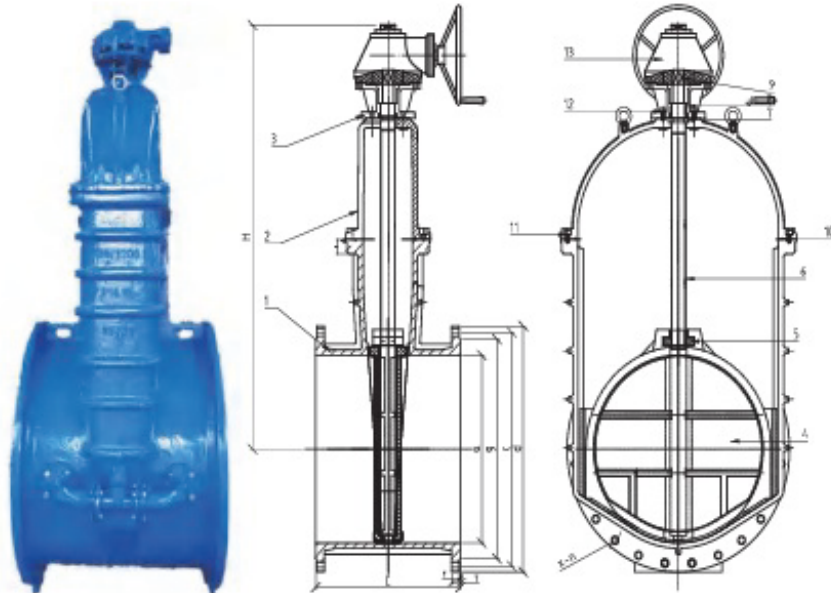
- 1.Design and manufacture: DIN 3352.
- 2.Flange dimensions: EN 1092-2/DIN 2533.
- 3.Face to face dimensions: DIN 3202 F4/F5.
- 4.Fusion bonded epoxy coating inside and outside.
- 5.Size up to DN1200.

Materials list:

| | | | | | |
|---|------------|--------------|----|---------------|--------------|
| 1 | Body | Ductile Iron | 9 | Locating ring | X20Cr13 |
| 2 | Wedge | D.I.+ EPDM | 10 | O-ring | NBR/Viton |
| 3 | Stem nut | BRASS | 11 | Bonnet nut | BRASS |
| 4 | Stem | X20Cr13 | 12 | Minipad | TFL |
| 5 | Gasket | NBR | 13 | Dust ring | NBR |
| 6 | Bonnet | Ductile Iron | 14 | Wheel | Carbon steel |
| 7 | Bonnt bolt | Carbon steel | 15 | Washer | Carbon steel |
| 8 | O-ring | NBR/Viton | 16 | Bolt | Carbon steel |

| DN | D | D1 | D2 | L(F4) | L(F5) | b | f | Z-d | H |
|-----|-----|-----|-----|-------|-------|------|---|-------|------|
| 50 | 165 | 125 | 99 | 150 | 250 | 19 | 3 | 4-19 | 240 |
| 65 | 185 | 145 | 118 | 170 | 270 | 19 | 3 | 4-19 | 270 |
| 80 | 200 | 160 | 132 | 180 | 280 | 19 | 3 | 8-19 | 300 |
| 100 | 220 | 180 | 156 | 190 | 300 | 19 | 3 | 8-19 | 330 |
| 125 | 250 | 210 | 184 | 200 | 325 | 19 | 3 | 8-19 | 375 |
| 150 | 285 | 240 | 211 | 210 | 350 | 19 | 3 | 8-23 | 425 |
| 200 | 340 | 295 | 266 | 230 | 400 | 20 | 3 | 12-23 | 515 |
| 250 | 400 | 355 | 319 | 250 | 450 | 22 | 3 | 12-28 | 600 |
| 300 | 455 | 410 | 370 | 270 | 500 | 24.5 | 4 | 12-28 | 685 |
| 350 | 520 | 470 | 429 | 290 | 550 | 26.5 | 4 | 16-28 | 755 |
| 400 | 580 | 525 | 480 | 310 | 600 | 28 | 4 | 16-31 | 835 |
| 450 | 640 | 585 | 548 | 330 | 650 | 30 | 4 | 20-31 | 880 |
| 500 | 715 | 650 | 609 | 350 | 700 | 31.5 | 4 | 20-34 | 960 |
| 600 | 840 | 770 | 720 | 390 | 800 | 35 | 5 | 20-37 | 1120 |

DIN Resilient Seat Gate Valve NRS



Materials list:

| | | |
|----|----------------|-------------------|
| 1 | Body | Ductile Iron |
| 2 | Wedge | Ductile iron/EPDM |
| 3 | Stem Nut | Brass |
| 4 | Stem | Stainless Steel |
| 5 | Gasket | EPDM |
| 6 | Bonnet | Ductile Iron |
| 7 | Bonnet Bolt | Carbon Steel |
| 8 | Washer | Carbon Steel |
| 9 | Nut | Carbon Steel |
| 10 | O-Ring | NBR |
| 11 | Locating Ring | Brass |
| 12 | Minipad | TFL |
| 13 | O-Ring | NBR |
| 14 | O-Ring | NBR |
| 15 | Seal Ring | Brass |
| 16 | Dust Ring | EPDM |
| 17 | Gland | Ductile Iron |
| 18 | Wheel Gear Box | |

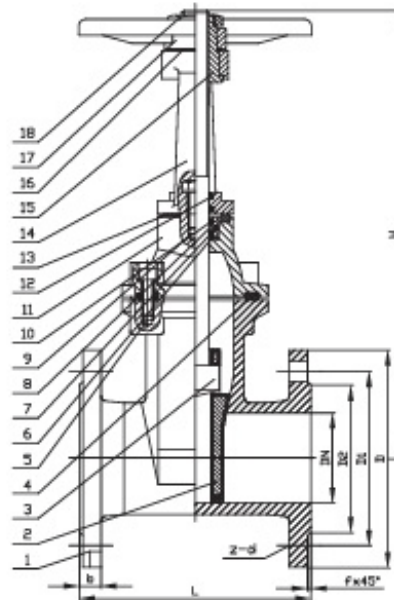
PN10

| DN | D | D1 | D2 | H | L | T | F | x-n |
|------|------|------|------|------|-----|----|---|-------|
| 700 | 895 | 840 | 794 | 1390 | 430 | 32 | 5 | 24-31 |
| 800 | 1015 | 950 | 901 | 1520 | 470 | 35 | 5 | 24-34 |
| 900 | 1115 | 1050 | 1001 | 1860 | 510 | 37 | 5 | 28-34 |
| 1000 | 1230 | 1160 | 1112 | 1980 | 550 | 40 | 5 | 28-37 |
| 1200 | 1455 | 1380 | 1328 | 2540 | 630 | 45 | 5 | 32-40 |

PN16

| DN | D | D1 | D2 | H | L | T | F | x-n |
|------|------|------|------|------|-----|----|---|-------|
| 700 | 910 | 840 | 794 | 1390 | 430 | 40 | 5 | 24-37 |
| 800 | 1025 | 950 | 901 | 1520 | 470 | 43 | 5 | 24-40 |
| 900 | 1125 | 1050 | 1001 | 1860 | 510 | 47 | 5 | 28-40 |
| 1000 | 1255 | 1170 | 1112 | 1980 | 550 | 50 | 5 | 28-43 |
| 1200 | 1485 | 1390 | 1328 | 2540 | 630 | 57 | 5 | 32-49 |

DIN Resilient Seat Gate Valve OS&Y



Note:

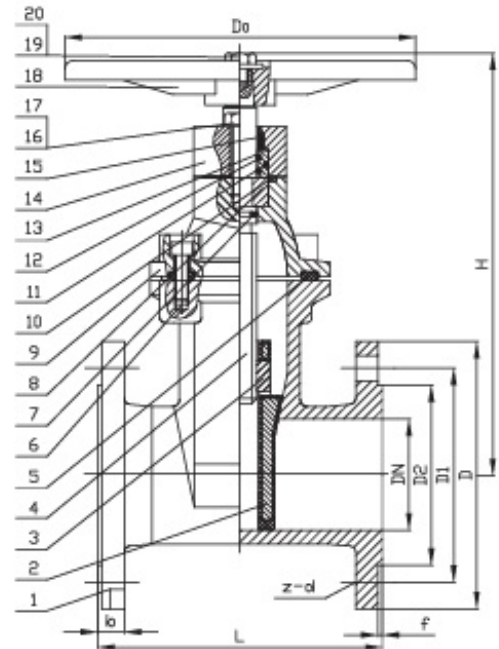
1. Design and manufacture: DIN 3352.
2. Flange dimensions: EN 1092-2/DIN 2533.
3. Face to face dimensions: DIN 3202 F4/F5.
4. Fusion bonded epoxy coating inside and outside.
5. Size up to DN1200.

Materials list:

| | | | | | |
|---|-----------|-------------------|----|-------------|--------------|
| 1 | Body | Ductile Iron | 10 | O-Ring | NBR |
| 2 | Wedge | Ductile Iron/EPDM | 11 | Bonnet | Ductile Iron |
| 3 | Stem | Stainless Steel | 12 | Dust Ring | NBR |
| 4 | Gasket | NBR | 13 | Washer | NYL |
| 5 | Bolt | Carbon Steel | 14 | Yoke | Ductile Iron |
| 6 | Washer | TFL | 15 | Stem Nut | Brass |
| 7 | O-Ring | NBR | 16 | Washer | NYL |
| 8 | Seal Ring | Brass | 17 | Wheel | Ductile Iron |
| 9 | Bolt | Caron Steel | 18 | Locking Nut | Brass |

| DN | D | D1 | D2 | L(F4) | L(F5) | b | F | H | Z-d |
|-----|-----|-----|-----|-------|-------|------|---|------|-------|
| 40 | 150 | 110 | 84 | 140 | 240 | 18 | 3 | 280 | 4-19 |
| 50 | 165 | 125 | 99 | 150 | 250 | 19 | 3 | 290 | 4-19 |
| 65 | 185 | 145 | 118 | 170 | 270 | 19 | 3 | 340 | 4-19 |
| 80 | 200 | 160 | 132 | 180 | 280 | 19 | 3 | 385 | 8-19 |
| 100 | 220 | 180 | 156 | 190 | 300 | 19 | 3 | 455 | 8-19 |
| 125 | 250 | 210 | 184 | 200 | 325 | 19 | 3 | 525 | 8-19 |
| 150 | 285 | 240 | 211 | 210 | 350 | 19 | 3 | 565 | 8-23 |
| 200 | 340 | 295 | 266 | 230 | 400 | 20 | 3 | 760 | 12-23 |
| 250 | 400 | 355 | 319 | 250 | 450 | 22 | 3 | 910 | 12-28 |
| 300 | 455 | 410 | 370 | 270 | 500 | 24.5 | 4 | 1030 | 12-28 |
| 350 | 520 | 470 | 429 | 290 | 550 | 26.5 | 4 | 1000 | 16-28 |
| 400 | 580 | 525 | 480 | 310 | 600 | 28 | 4 | 1100 | 16-31 |
| 450 | 640 | 585 | 548 | 330 | 650 | 30 | 4 | 1170 | 20-31 |
| 500 | 715 | 650 | 609 | 350 | 700 | 31.5 | 4 | 1230 | 20-34 |
| 600 | 840 | 770 | 720 | 390 | 800 | 35 | 5 | 1370 | 20-37 |

BS Resilient Seat Gate Valve NRS



Note:

1. Design and manufacture: BS 5163A EN 1074.
2. Face to face: EN558-1 series 3.
3. Fusion bonded epoxy coating inside and outside.
4. Size up to 24".

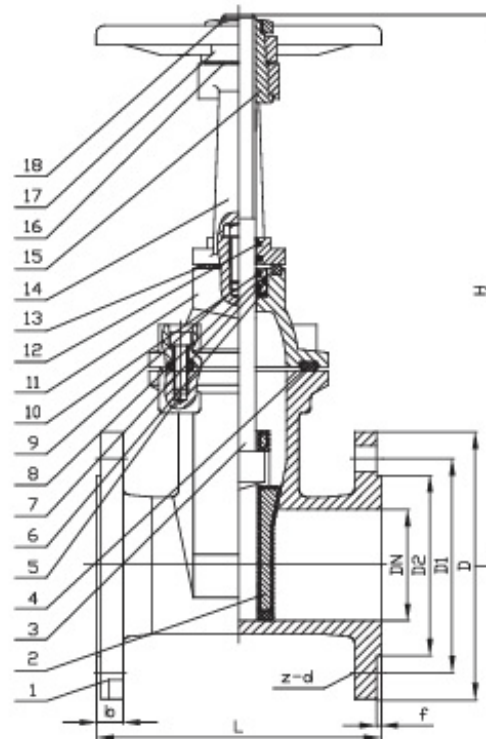
Materials list:

| | | |
|----|---------------|-------------------|
| 1 | Body | Ductile Iron |
| 2 | Wedge | Ductile Iron/EPDM |
| 3 | Stem Nut | Brass |
| 4 | Stem | Stainless Steel |
| 5 | Gasket | NBR |
| 6 | Bonnet Bolt | Carbon Steel |
| 7 | O-Ring | NBR |
| 8 | Locating Ring | Brass |
| 9 | Bonnet | Ductile Iron |
| 10 | Minipad | TFL/NYL |

| | | |
|----|-----------|--------------|
| 11 | O-Ring | NBR |
| 12 | O-Ring | NBR |
| 13 | Seal Ring | Brass |
| 14 | Gland | Ductile Iron |
| 15 | Dust Ring | NBR |
| 16 | Washer | Carbon Steel |
| 17 | Bolt | Carbon Steel |
| 18 | Wheel | Ductile Iron |
| 19 | Washer | Carbon Steel |
| 20 | Bolt | Carbon Steel |

| DN | D | D1 | D2 | H | L | b | F | Z-d | D0 |
|-----|-----|-----|-----|-----|-----|------|---|-------|-----|
| 40 | 150 | 110 | 84 | 228 | 165 | 19 | 3 | 4-19 | 200 |
| 50 | 165 | 125 | 99 | 253 | 178 | 19 | 3 | 4-19 | 220 |
| 65 | 185 | 145 | 118 | 278 | 190 | 19 | 3 | 4-19 | 220 |
| 80 | 200 | 160 | 132 | 308 | 203 | 19 | 3 | 8-19 | 250 |
| 100 | 220 | 180 | 156 | 342 | 229 | 19 | 3 | 8-19 | 280 |
| 125 | 250 | 210 | 184 | 395 | 254 | 19 | 3 | 8-19 | 320 |
| 150 | 285 | 240 | 211 | 437 | 267 | 19 | 3 | 8-23 | 320 |
| 200 | 340 | 295 | 266 | 523 | 292 | 20 | 3 | 12-23 | 350 |
| 250 | 400 | 355 | 319 | 605 | 330 | 22 | 3 | 12-28 | 400 |
| 300 | 455 | 410 | 370 | 688 | 356 | 24.5 | 4 | 12-28 | 450 |
| 350 | 520 | 470 | 429 | 770 | 381 | 26.5 | 4 | 16-28 | 600 |
| 400 | 580 | 525 | 480 | 850 | 406 | 28 | 4 | 16-31 | 600 |

BS Resilient Seat Gate Valve OS&Y



Note:

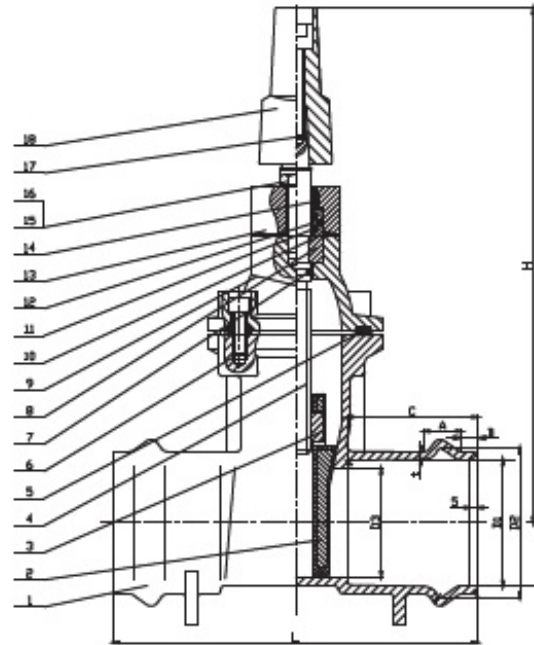
- 1.Design and manufacture: BS 5163A EN 1171 EN 1074.
- 2.Face to face: EN558-1 series 3.
- 3.Fusion bonded epoxy coating inside and outside.
- 4.Size up to 24".

Materials list:

| | | | | | |
|---|-----------|-------------------|----|-------------|--------------|
| 1 | Body | Ductile Iron | 10 | O-Ring | NBR |
| 2 | Wedge | Ductile Iron/EPDM | 11 | Bonnet | Ductile Iron |
| 3 | Stem | Stainless Steel | 12 | Dust Ring | NBR |
| 4 | Gasket | NBR | 13 | Washer | NYL |
| 5 | Bolt | Carbon Steel | 14 | Yoke | Ductile Iron |
| 6 | Washer | TFL | 15 | Stem Nut | Brass |
| 7 | O-Ring | NBR | 16 | Washer | NYL |
| 8 | Seal Ring | Brass | 17 | Wheel | Ductile Iron |
| 9 | Bolt | Carbon Steel | 18 | Locking Nut | Brass |

| DN | D | D1 | D2 | L | b | f | H | Z-d |
|-----|-----|-----|-----|-----|------|---|------|-------|
| 50 | 165 | 125 | 99 | 178 | 19 | 3 | 317 | 4-19 |
| 65 | 185 | 145 | 118 | 190 | 19 | 3 | 354 | 4-19 |
| 80 | 200 | 160 | 132 | 203 | 19 | 3 | 391 | 8-19 |
| 100 | 220 | 180 | 156 | 229 | 19 | 3 | 450 | 8-19 |
| 125 | 250 | 210 | 184 | 254 | 19 | 3 | 549 | 8-19 |
| 150 | 285 | 240 | 211 | 267 | 19 | 3 | 605 | 8-23 |
| 200 | 340 | 295 | 266 | 292 | 20 | 3 | 756 | 12-23 |
| 250 | 400 | 355 | 319 | 330 | 22 | 3 | 896 | 12-28 |
| 300 | 455 | 410 | 370 | 356 | 24.5 | 4 | 1031 | 12-28 |
| 350 | 520 | 470 | 429 | 381 | 26.5 | 4 | 1169 | 16-28 |
| 400 | 580 | 525 | 480 | 406 | 28 | 4 | 1297 | 16-31 |

Socket End Resilient Seat Gate Valve



Note:

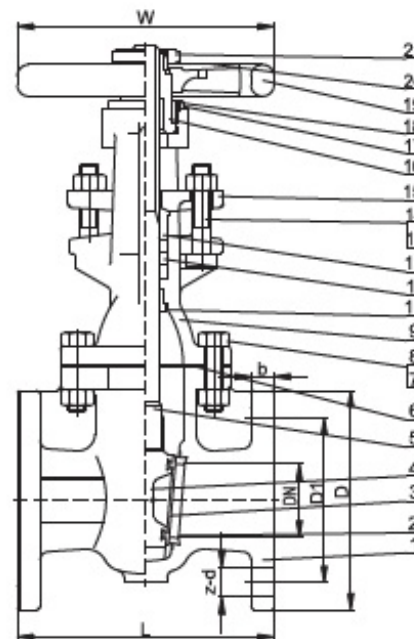
- 1. Design and manufacture: BS 5150/AWWA C509/DIN 3352.
- 2. Face to face dimensions: ISO 5752.
- 3. Fusion bonded epoxy coating inside and outside.
- 4. Size up to 24".

Materials list:

| | | | | | |
|---|---------------|-------------------|----|-----------|--------------|
| 1 | Body | Ductile Iron | 10 | Minipad | NBR |
| 2 | Wedge | Ductile Iron/EPDM | 11 | O-ring | NBR |
| 3 | Stem Nut | Brass | 12 | Seal Ring | Brass |
| 4 | Stem | Stainless Steel | 13 | Gland | Ductile Iron |
| 5 | Gasket | NBR | 14 | Dust Ring | NBR |
| 6 | Bonnet Bolt | Carbon Steel | 15 | Washer | Carbon Steel |
| 7 | O-ring | NBR | 16 | Bolt | Carbon Steel |
| 8 | Locating Ring | Brass | 17 | Bolt | Carbon Steel |
| 9 | Bonnet | Ductile Iron | 18 | Cap | Ductile Iron |

| DN | D1 | D1 | D3 | R1 | R2 | R3 | A | B | C | t | L | H |
|---------|-------|-------|-----|------|--------|--------|------|----|-----|-----|---------|-----|
| 40/50 | 50.8 | 65.3 | 40 | 5.0 | 8±2 | 16±2 | 29.9 | 11 | 90 | 6 | 335±1.0 | 230 |
| 50/65 | 63.8 | 80.2 | 55 | 5.0 | 8±2 | 16±2 | 32 | 15 | 90 | 6 | 335±1.0 | 250 |
| 65/75 | 75.8 | 94.1 | 65 | 5.5 | 9±2 | 18±2 | 35.7 | 15 | 110 | 6 | 335±1.0 | 275 |
| 80/90 | 90.9 | 110.9 | 78 | 6.0 | 10±2 | 19±3 | 39 | 17 | 110 | 6 | 335±1.0 | 306 |
| 100/110 | 111.0 | 132.7 | 98 | 6.5 | 12±2 | 21±4 | 43.1 | 18 | 110 | 7 | 355±1.0 | 337 |
| 125/140 | 141.1 | 164.5 | 125 | 6.97 | 15±2 | 24±5 | 48 | 20 | 120 | 9 | 405±1.0 | 395 |
| 150/160 | 161.2 | 186.2 | 140 | 7.5 | 17±2 | 27±5 | 52 | 22 | 120 | 7 | 405±1.0 | 429 |
| 200/200 | 201.4 | 227.8 | 178 | 8.0 | 18±4 | 30±7 | 56 | 24 | 135 | 7.5 | 450±1.0 | 522 |
| 225/225 | 227 | 255 | 200 | 8.5 | 18.5±4 | 30.5±7 | 58 | 26 | 135 | 8 | 450±1.0 | 522 |
| 250/250 | 251.7 | 282.8 | 228 | 9.0 | 23±4 | 37±7 | 66.5 | 27 | 150 | 8.5 | 500±2.0 | 599 |
| 280/280 | 282 | 312 | 250 | 10 | 20±4 | 65±7 | 72 | 27 | 150 | 8.5 | 500±2.0 | 599 |
| 300/315 | 317.0 | 351.5 | 293 | 10.5 | 24±5 | 55.7±7 | 77.5 | 30 | 170 | 8.5 | 500±2.0 | 689 |

MSS Metal Seat Gate Valve OS&Y



Note:

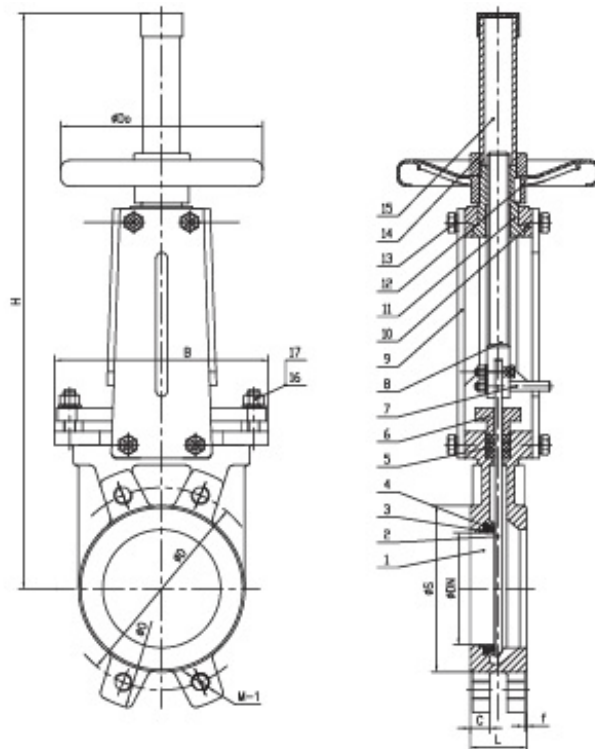
- 1.Design and manufacture: MSS SP-70.
- 2.Flange dimensions: ASME B16.1.
- 3.Face to face dimensions: ASME B16.10.
- 5.Size up to 36".

Materials list:

| | | | | | |
|----|----------------|------------|----|------------------|------------|
| 1 | Body | ASTM A126B | 12 | Gland | ASTM B584 |
| 2 | Body seat ring | ASTM B62 | 13 | Bolts | ASTM A307B |
| 3 | Disc seat ring | ASTM B62 | 14 | Nut | ASTM A307B |
| 4 | Wedge | ASTM A126B | 15 | Gland follower | ASTM A536 |
| 5 | Stem | ASTM B16 | 16 | Yoke sleeve | ASTM B584 |
| 6 | Gasket | Graphite | 17 | Yoke bushing nut | ASTM A126B |
| 7 | Bolts | ASTM A307B | 18 | Screw | ASTM A307B |
| 8 | Nut | ASTM A307B | 19 | Handwheel | ASTM A126B |
| 9 | Bonnet | ASTM A126B | 20 | Nameplate | AL 2024 |
| 10 | Back seat | ASTM B584 | 21 | Nut | ASTM A536 |
| 11 | Packing | Graphite | | | |

| DN | D1 | D | L | W | b | Z-d |
|-----|-------|-------|-------|-----|------|-------|
| 50 | 121 | 152 | 178 | 178 | 15.9 | 4-19 |
| 65 | 140 | 178 | 190.5 | 178 | 17.5 | 4-19 |
| 80 | 152.5 | 190 | 203.2 | 200 | 19.1 | 4-19 |
| 100 | 190.5 | 228.6 | 228.6 | 254 | 23.8 | 8-19 |
| 125 | 215.9 | 254 | 254 | 300 | 23.8 | 8-22 |
| 150 | 241.5 | 282 | 266.7 | 300 | 25.4 | 8-22 |
| 200 | 298.5 | 343 | 292 | 348 | 28.6 | 8-22 |
| 250 | 362 | 406 | 330 | 400 | 30.2 | 12-25 |
| 300 | 432 | 483 | 355.6 | 457 | 31.8 | 12-25 |
| 350 | 476 | 533 | 381 | 508 | 35 | 12-29 |
| 400 | 540 | 597 | 406 | 558 | 36.6 | 16-29 |
| 450 | 578 | 635 | 432 | 610 | 39.7 | 16-32 |
| 500 | 635 | 699 | 457 | 640 | 42.9 | 20-32 |
| 600 | 749 | 813 | 508 | 762 | 47.6 | 20-35 |

Knife Gate Valve



Note:

- 1.Design and manufacture: MSS SP81
- 2.Size up to: 18".

Materials list:

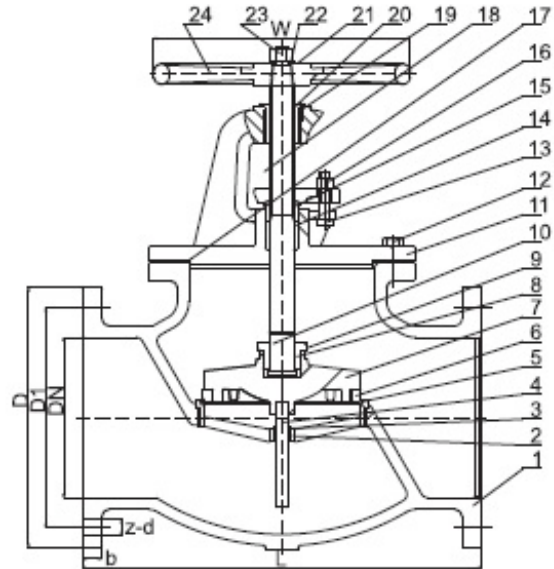
| | | | | | |
|---|----------------|---------------|----|---------------|---------------|
| 1 | Body | GGG40 | 10 | Steel Block | ASTM A216 WCB |
| 2 | Gate | SS304 | 11 | Stem Nut | Brass |
| 3 | Retainer Ring | SS304 | 12 | Handwheel | Carbon Steel |
| 4 | Sealing Ring | EPDM | 13 | Bolt | ASTM A193 B7 |
| 5 | Packing | PTFE+Silicone | 14 | Handwheel Cap | ASTM A36 |
| 6 | Packing Gland | ASTM A216 WCB | 15 | Protector | ASTM A36 |
| 7 | Indicator | SS420 | 16 | Bolt | ASTM A194 B7 |
| 8 | Stem | ASTM A276 420 | 17 | Nut | ASTM A194 2H |
| 9 | Support Plates | ASTM A36 | | | |

| DN | L | O | D | S | C | f | M-1 | B | H | Do |
|-----|-----|-----|-----|-----|----|---|--------|-----|------|-----|
| 50 | 40 | 160 | 125 | 95 | 16 | 2 | 4-M16 | 136 | 375 | 180 |
| 65 | 40 | 180 | 145 | 110 | 16 | 2 | 4-M16 | 151 | 420 | 180 |
| 80 | 50 | 200 | 160 | 127 | 17 | 2 | 8-M16 | 170 | 450 | 200 |
| 100 | 50 | 220 | 180 | 148 | 17 | 2 | 8-M16 | 190 | 512 | 200 |
| 125 | 50 | 245 | 210 | 174 | 17 | 2 | 8-M16 | 212 | 570 | 220 |
| 150 | 60 | 285 | 240 | 199 | 21 | 2 | 8-M20 | 230 | 665 | 250 |
| 200 | 60 | 340 | 295 | 250 | 21 | 2 | 8-M20 | 286 | 825 | 300 |
| 250 | 70 | 395 | 350 | 308 | 24 | 2 | 12-M20 | 338 | 1000 | 350 |
| 300 | 70 | 445 | 400 | 360 | 24 | 2 | 12-M20 | 388 | 1155 | 350 |
| 350 | 96 | 500 | 460 | 416 | 33 | 2 | 16-M20 | 460 | 1310 | 400 |
| 400 | 100 | 560 | 515 | 466 | 35 | 2 | 16-M24 | 520 | 1475 | 500 |

GLOBE VALVE SERIES



MSS Globe Valve



Note:

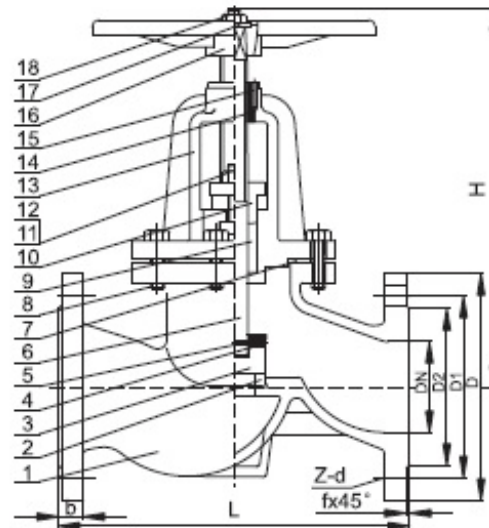
- 1.Design and manufacture: BS 5152/MSS SP-85.
- 2.Flange dimensions: EN 1092-2/ASME B16.1.
- 3.Face to face dimensions: EN 558/ASME B16.10.
- 5.Size up to 12".

Materials list:

| | | | | | |
|----|------------|------------|----|----------------|------------|
| 1 | Body | ASTM A126B | 13 | Bolts | ASTM A307B |
| 2 | Seat | ASTM A126B | 14 | Packing | Graphite |
| 3 | Guide | ASTM B16 | 15 | Gland | ASTM B584 |
| 4 | Seat ring | ASTM B62 | 16 | Nut | ASTM A307B |
| 5 | Stem guide | ASTM B16 | 17 | Gasket | Graphite |
| 6 | Disc ring | ASTM B62 | 18 | Gland follower | ASTM A536 |
| 7 | Disc | ASTM A126B | 19 | Screws | ASTM A307B |
| 8 | Swivel | ASTM B584 | 20 | Yoke Sleeve | ASTM B62 |
| 9 | Gasket | ASTM B16 | 21 | Nameplate | AL 2024 |
| 10 | Stem | ASTM B16 | 22 | Washer | ASTM A307B |
| 11 | Bonnet | ASTM A126B | 23 | Nut | ASTM A307B |
| 12 | Bolts | ASTM A307B | 24 | Handwheel | ASTM A126B |

| DN | L | D1 | D | b | Z-d | W |
|-----|-------|-----|-----|------|--------|-----|
| 50 | 203 | 121 | 152 | 15.9 | 4-19 | 178 |
| 65 | 216 | 140 | 178 | 18 | 4-19 | 178 |
| 80 | 241 | 152 | 191 | 19 | 4-19 | 200 |
| 100 | 292 | 191 | 229 | 24 | 8-19 | 254 |
| 125 | 330 | 216 | 254 | 23.8 | 8-22 | 300 |
| 150 | 356 | 241 | 279 | 25 | 8-22.2 | 300 |
| 200 | 495.3 | 299 | 343 | 28.6 | 8-22.2 | 348 |
| 250 | 622 | 362 | 406 | 30.2 | 12-25 | 400 |
| 300 | 698.5 | 432 | 483 | 32 | 12-25 | 457 |

DIN Globe Valve



Note:

- 1.Design and manufacture: DIN 3356.
- 2.Flange dimensions: EN 1092-2/DIN 2533.
- 3.Face to face dimensions: DIN 3202.
- 5.Size up to 12".

Materials list:

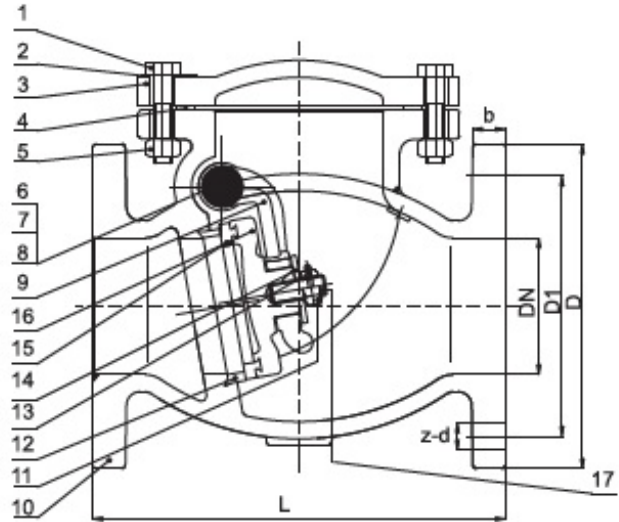
| | | | | | |
|---|-------------|--------------|----|------------|--------------|
| 1 | Body | Ductile Iron | 10 | Gland | Ductile Iron |
| 2 | Seat | Brass | 11 | T-Bolt | Carbon steel |
| 3 | Disc | Brass | 12 | Nut | Carbon steel |
| 4 | Bolt | Carbon steel | 13 | Bonnet | Ductile iron |
| 5 | Steel Ball | Carbon steel | 14 | Stem Nut | Brass |
| 6 | Stem | X20Cr13 | 15 | Bolt | Carbon steel |
| 7 | Gasket | NBR | 16 | Wheel | Carbon steel |
| 8 | Bonnet Bolt | Carbon steel | 17 | Washer | Carbon steel |
| 9 | Packing | Graphite | 18 | Wheel Bolt | Carbon steel |

| DN | D | D1 | D2 | L | b | f | Z-d | H |
|-----|-----|-----|-----|-----|----|---|-------|-----|
| 50 | 165 | 125 | 102 | 230 | 20 | 3 | 4-18 | 277 |
| 65 | 185 | 145 | 122 | 290 | 20 | 3 | 4-18 | 312 |
| 80 | 200 | 160 | 138 | 310 | 22 | 3 | 8-18 | 342 |
| 100 | 220 | 180 | 158 | 350 | 24 | 3 | 8-18 | 378 |
| 125 | 250 | 210 | 188 | 400 | 26 | 3 | 8-18 | 447 |
| 150 | 285 | 240 | 212 | 480 | 26 | 3 | 8-22 | 503 |
| 200 | 340 | 295 | 268 | 600 | 30 | 3 | 12-22 | 591 |
| 250 | 405 | 355 | 320 | 730 | 32 | 3 | 12-26 | 680 |
| 300 | 460 | 410 | 378 | 850 | 32 | 4 | 12-26 | 750 |

CHECK VALVE SERIES



MSS Swing Check Valve



Note:

- 1.Design and manufacture: MSS SP-71.
- 2.Flange dimensions: ASME B16.1.
- 3.Face to face dimensions: ASME B16.10.
- 5.Size up to 36".

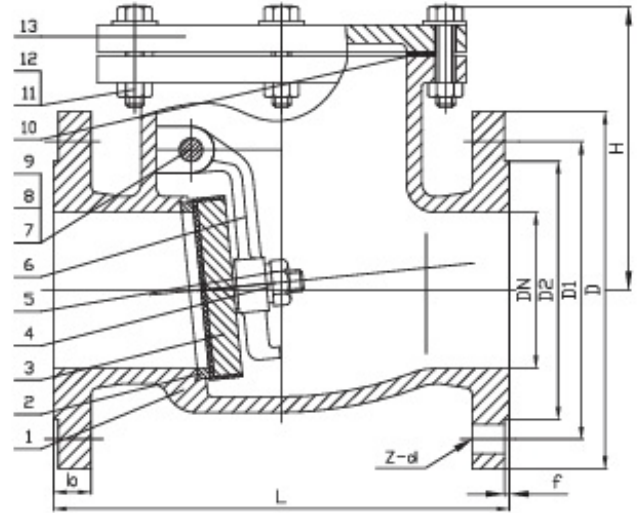
Materials list:

| | | |
|---|----------------|---------------|
| 1 | Bolt | ASTM A570Gr.A |
| 2 | Nameplate | AL 2024 |
| 3 | Bonnet | ASTM A126B |
| 4 | Gasket | Graphite |
| 5 | Nut | ASTM A570Gr.A |
| 6 | Hinge pin plug | ASTM B16 |
| 7 | Gasket | Fiber |
| 8 | Hinge pin | ASTM B16 |
| 9 | Hinge | ASTM A536 |

| | | |
|----|-----------|---------------|
| 10 | Disc | ASTM A126B |
| 11 | Disc ring | ASTM B62 |
| 12 | Washer | ASTM A570Gr.A |
| 13 | Split pin | ASTM A276 420 |
| 14 | Seat ring | ASTM B62 |
| 15 | Nut | ASTM A570Gr.A |
| 16 | Body | ASTM A126B |
| 17 | Bolt | ASTM A570Gr.A |

| DN | L | D1 | D | b | Z-d |
|-----|-----|-------|-------|------|-------|
| 50 | 203 | 121 | 152 | 15.9 | 4-19 |
| 65 | 216 | 140 | 178 | 17.5 | 4-19 |
| 80 | 241 | 152.5 | 190 | 19 | 4-19 |
| 100 | 292 | 190.5 | 228.6 | 24 | 8-19 |
| 125 | 330 | 215.9 | 254 | 23.8 | 8-22 |
| 150 | 356 | 241.5 | 280 | 25.4 | 8-22 |
| 200 | 495 | 298.5 | 343 | 30 | 8-22 |
| 250 | 622 | 362 | 406 | 31 | 12-25 |
| 300 | 698 | 432 | 483 | 31.8 | 12-25 |
| 350 | 787 | 476 | 533 | 35 | 12-29 |
| 400 | 914 | 540 | 597 | 36.6 | 16-29 |

DIN Swing Check Valve



Note:

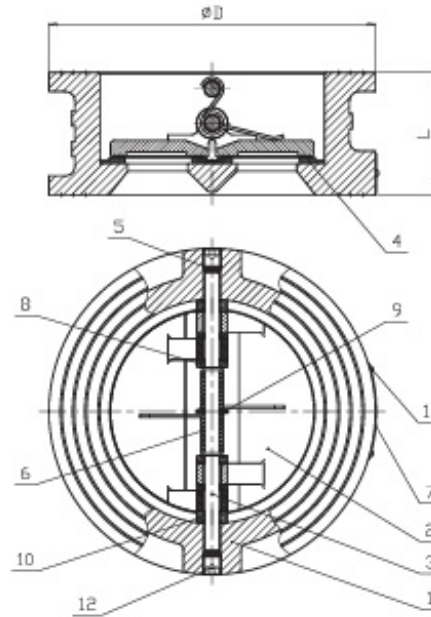
- 1. Design and manufacture: DIN3202.
- 2. Flange dimensions: DIN 2501.
- 3. Size up to 24".

Materials list:

| | | |
|----|----------------|-------------------|
| 1 | Body | Ductile Iron |
| 2 | Body Seat Ring | Brass |
| 3 | Disc | Ductile Iron/EPDM |
| 4 | Washer | Carbon Steel |
| 5 | Locking Nut | Carbon Steel |
| 6 | Arm | Ductile Iron |
| 7 | Hing Nut | Stainless Steel |
| 8 | Plug | Carbon Steel |
| 9 | Gasket | NYL |
| 10 | Gasket | EPDM |
| 11 | Bolt | Carbon Steel |
| 12 | Nut | Carbon Steel |
| 13 | Bonnet | Ductile Iron |

| DN | D | D1 | D2 | L | b | f | Z-d | H |
|-----|-----|-----|-----|-----|------|---|-------|-----|
| 40 | 150 | 110 | 84 | 180 | 19 | 3 | 4-19 | 120 |
| 50 | 165 | 125 | 99 | 200 | 19 | 3 | 4-19 | 137 |
| 65 | 185 | 145 | 118 | 240 | 19 | 3 | 4-19 | 147 |
| 80 | 200 | 160 | 132 | 260 | 19 | 3 | 8-19 | 159 |
| 100 | 220 | 180 | 156 | 300 | 19 | 3 | 8-19 | 180 |
| 125 | 250 | 210 | 184 | 350 | 19 | 3 | 8-19 | 203 |
| 150 | 285 | 240 | 211 | 400 | 19 | 3 | 8-23 | 223 |
| 200 | 340 | 295 | 266 | 500 | 20 | 3 | 8-23 | 258 |
| 250 | 395 | 350 | 319 | 600 | 22 | 3 | 12-23 | 290 |
| 300 | 445 | 400 | 370 | 700 | 24.5 | 4 | 12-23 | 325 |
| 350 | 505 | 460 | 429 | 800 | 24.5 | 4 | 16-23 | 361 |
| 400 | 565 | 515 | 480 | 900 | 24.5 | 4 | 16-28 | 388 |

Dual Plate Check Valve



Note:

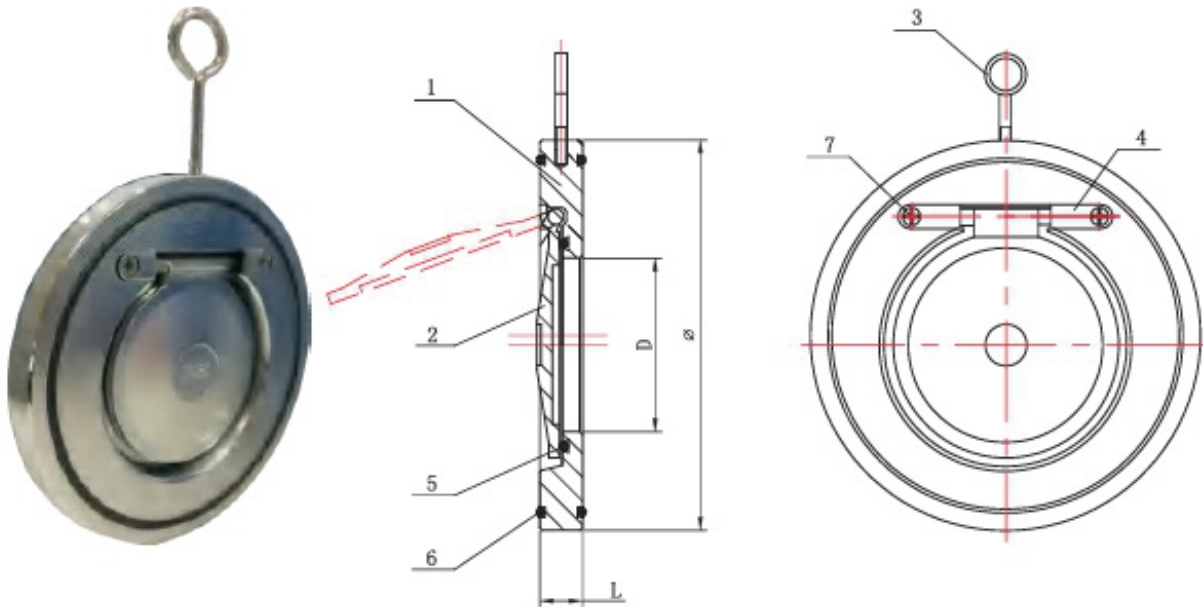
- 1. Design and manufacture: EN 12334/APS 594.
- 2. Flange dimensions: ASME B16.1/EN 1092.
- 3. Size up to 32".

Materials list:

| | | |
|---|-----------|---------------|
| 1 | Body | Ductile Iron |
| 2 | Spring | S.S.316 |
| 3 | Plate | S.S. / Bronze |
| 4 | Seat | EPDM/NBR |
| 5 | Hinge Pin | S.S.410/420 |
| 6 | Washer | PTFE |

| DN | A | B | L | H1 | H2 |
|-----|-----|-----|-----|----|----|
| 50 | 106 | 65 | 43 | 7 | 19 |
| 65 | 126 | 80 | 46 | 6 | 20 |
| 80 | 141 | 94 | 64 | 8 | 28 |
| 100 | 161 | 117 | 64 | 9 | 27 |
| 125 | 191 | 145 | 70 | 9 | 30 |
| 150 | 217 | 170 | 76 | 10 | 31 |
| 200 | 272 | 224 | 89 | 10 | 33 |
| 250 | 327 | 265 | 114 | 20 | 50 |
| 300 | 377 | 310 | 114 | 13 | 43 |
| 350 | 437 | 360 | 127 | 13 | 45 |
| 400 | 487 | 410 | 140 | 15 | 52 |
| 450 | 537 | 450 | 152 | 17 | 58 |
| 500 | 592 | 505 | 152 | 18 | 58 |

Single Flap Wafer Check Valve

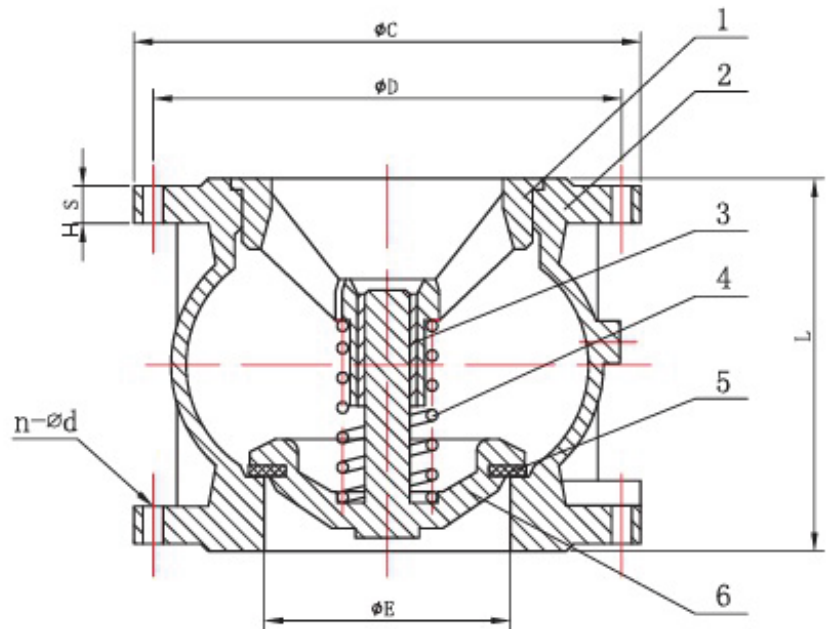


- 1. Valve design according to ASME B16.34.
- 2. Flangs according to DIN2501 .
- 3. Face-to-Face according to the request of client's , not standardized.
- 4. Valve inspection and testing according to API598-2004.

| SIZE | L | D | PN10 | PN16 |
|------|----|-----|------|------|
| 1.5" | 14 | 22 | 92 | |
| 2" | 14 | 32 | 107 | |
| 2.5" | 14 | 40 | 127 | |
| 3" | 14 | 54 | 142 | |
| 4" | 18 | 70 | 162 | |
| 5" | 18 | 92 | 192 | |
| 6" | 20 | 114 | 218 | |
| 8" | 22 | 154 | 273 | |
| 10" | 26 | 200 | 328 | 329 |
| 12" | 28 | 235 | 378 | 384 |
| 14" | 38 | 280 | 438 | 444 |
| 16" | 44 | 316 | 489 | 491 |
| 18" | 50 | 360 | 532 | 550 |
| 20" | 56 | 405 | 585 | 610 |
| 24" | 62 | 486 | 690 | 724 |

| | | |
|---|--------------|------|
| 1 | Body | WCB |
| 2 | Disc | WCB |
| 3 | Ring | WCB |
| 4 | Femno | WCB |
| 5 | Inner Gasket | EPDM |
| 6 | Outer Gasket | EPDM |
| 7 | Bolt | WCB |

Flange Type Silent Check Valve



Note:

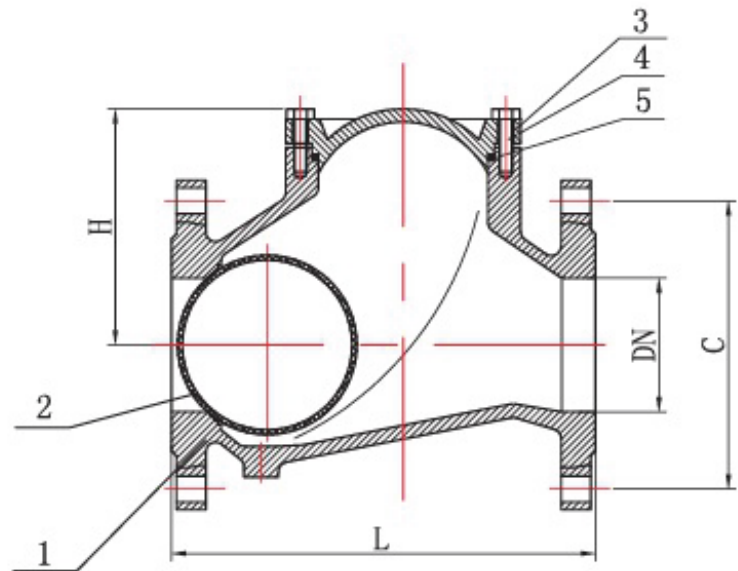
- 1.Design and manufacture: EN1074-3 .
- 2.Flange dimensions: DIN 2501.
- 3.Size up to 12".

Materials list:

| | | |
|---|--------------|------------------|
| 1 | Gasket | Carbon Steel |
| 2 | Nut | Carbon Steel |
| 3 | Body | Cast Iron |
| 4 | Disc | Ductile Iron/NBR |
| 5 | O-Ring | NBR |
| 6 | Guiding Stem | Stainless Steel |
| 7 | Spring | 65Mn |
| 8 | Bonnet | Cast Iron |

| DN | D | D1 | D2 | H | b | f | Z-d |
|-----|-----|-----|-----|-----|----|---|-------|
| 40 | 150 | 110 | 84 | 100 | 18 | 3 | 4-19 |
| 50 | 165 | 125 | 99 | 100 | 20 | 3 | 4-19 |
| 65 | 185 | 145 | 118 | 120 | 20 | 3 | 4-19 |
| 80 | 200 | 160 | 132 | 140 | 22 | 3 | 8-19 |
| 100 | 220 | 180 | 156 | 170 | 24 | 3 | 8-19 |
| 125 | 250 | 210 | 184 | 200 | 26 | 3 | 8-19 |
| 150 | 285 | 240 | 211 | 230 | 26 | 3 | 8-23 |
| 200 | 340 | 295 | 266 | 300 | 30 | 3 | 12-23 |
| 250 | 405 | 355 | 319 | 370 | 32 | 3 | 12-28 |
| 300 | 460 | 410 | 370 | 410 | 32 | 4 | 12-28 |

Ball Check Valve



Note:

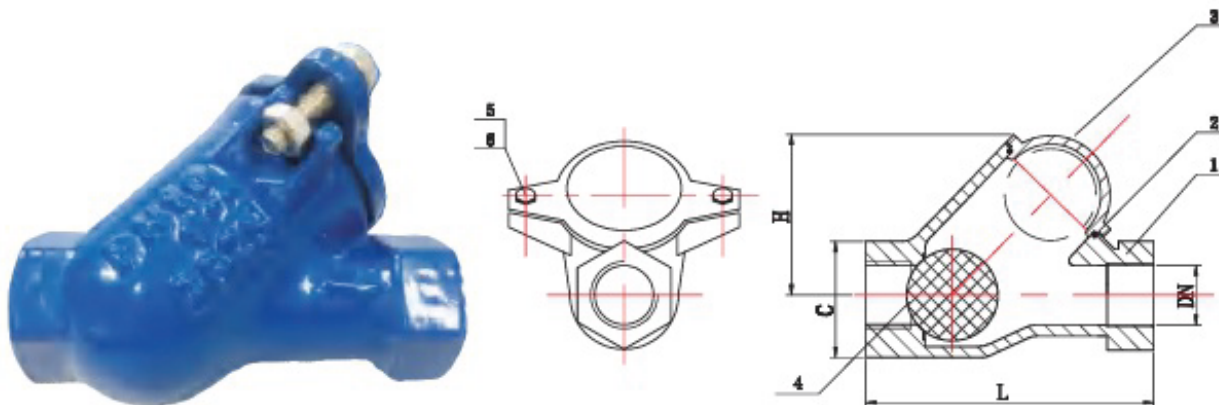
- 1. Design and manufacture: MSS SP-71/BS 5153/EN 12334.
- 2. Flange dimensions: ASME B16.18/EN 1092.
- 3. Face to face dimensions: EN 558-1/DIN 3202 F6.
- 4. Size up to 24".

Materials list:

| | | |
|---|---------------|------------------------|
| 1 | Body | Cast Iron/Ductile Iron |
| 2 | Ball | Cast Iron+NBR/EPDM |
| 3 | Screw & Bolt | Steel + zinc |
| 4 | Bonnet gasket | NBR/EPDM |
| 5 | Bonnet | Cast Iron/Ductile Iron |

| DN | D | D1 | D2 | L | b | H | f | Z-d |
|-----|-----|-----|-----|-----|------|-----|---|-------|
| 50 | 165 | 125 | 99 | 200 | 19 | 180 | 3 | 4-19 |
| 65 | 185 | 145 | 118 | 240 | 19 | 210 | 3 | 4-19 |
| 80 | 200 | 160 | 132 | 260 | 19 | 245 | 3 | 8-19 |
| 100 | 220 | 180 | 156 | 300 | 19 | 280 | 3 | 8-19 |
| 125 | 250 | 210 | 184 | 350 | 19 | 335 | 3 | 8-19 |
| 150 | 285 | 240 | 211 | 400 | 19 | 400 | 3 | 8-23 |
| 200 | 340 | 295 | 266 | 500 | 20 | 495 | 3 | 12-23 |
| 250 | 400 | 355 | 319 | 600 | 22 | 600 | 3 | 12-28 |
| 300 | 455 | 410 | 370 | 700 | 24.5 | 715 | 4 | 12-28 |

Screw End Ball Check Valve



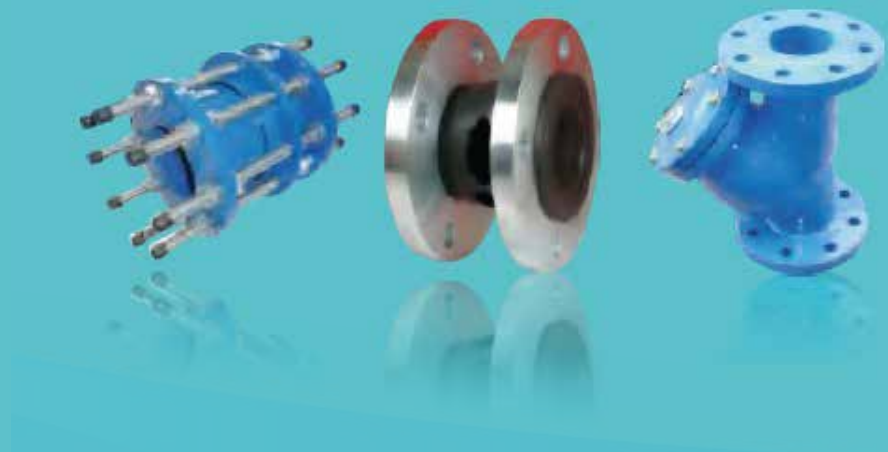
Note:

- 1. Working pressure: 1.6Mpa.
- 2. Pressure closure test pressure: 1.76Mpa.
- 3. Shell pressure test pressure: 2.4Mpa.
- 4. Working temperature: EPDM 10 °C --+120 °C
- 5. Connection type: BSP or BSPT

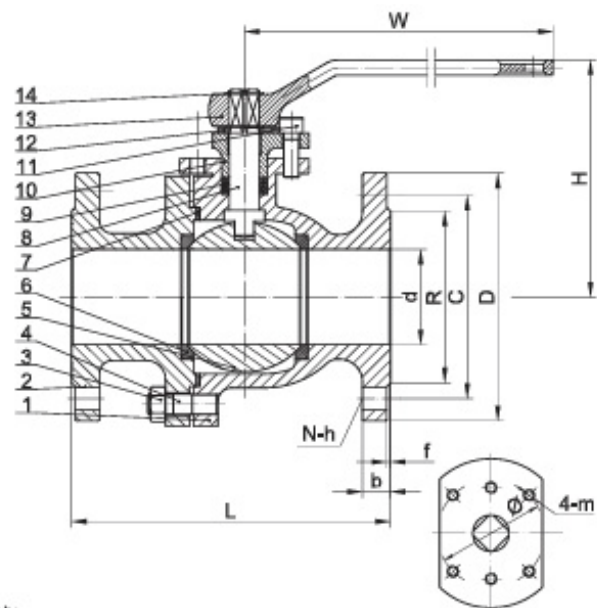
| SIZE | DN25 | DN32 | DN40 | DN50 | DN65 | DN80 |
|------|------|------|------|------|------|------|
| L | 125 | 132 | 145 | 174 | 200 | 243 |
| C | 47 | 59 | 70 | 82 | 106 | 132 |
| H | 75 | 75 | 85 | 126 | 113 | 165 |

| | | |
|---|-----------|--------------|
| 1 | Body | DUCTILE IRON |
| 2 | Gasket | EPDM |
| 3 | Cap | DUCTILE IRON |
| 4 | Ball | EPDM |
| 5 | Bolt | A2-70 |
| 6 | Screw Nut | A2-70 |

OTHER SERIES



Ball Valve



Note:

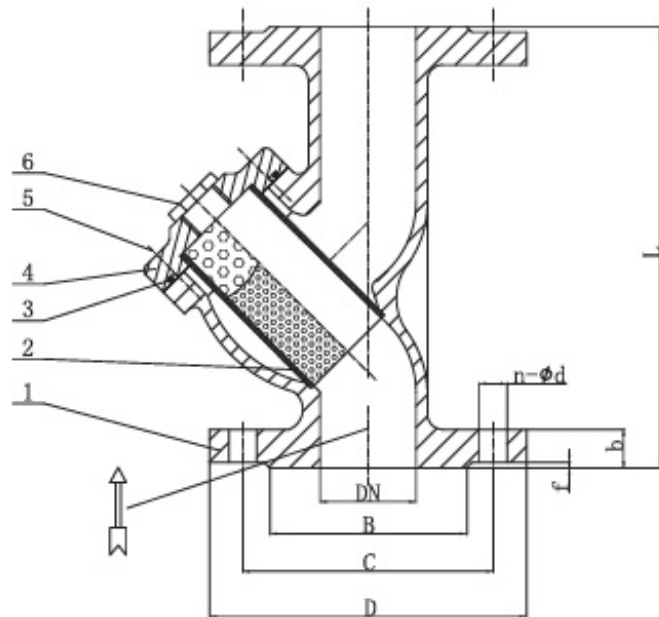
- 1.Design and manufacture:DIN3357.
- 2.Face to face:DIN3202.
- 3.End flange dimensions:DN15~DN100(F4)
DN125~DN250(F5).
- 4.Size up to:12" .

Materials list:

| | | |
|----|--------------|------------------------|
| 1 | Body | Cast Iron/Ductile Iron |
| 2 | Bonnet | Cast Iron/Ductile Iron |
| 3 | Nut | Carbon Steel |
| 4 | Bolting | Carbon Steel |
| 5 | Ball | Stainless Steel |
| 6 | Seat | PTFE |
| 7 | Gasket | PTFE |
| 8 | Stem | Stainless Steel |
| 9 | Stem Packing | PEFE |
| 10 | Gland Flange | Cast Iron/Ductile Iron |
| 11 | Gland Bolt | Carbon Steel |
| 12 | Stop Collar | Carbon Steel |
| 13 | Lever | Ductile Iron |
| 14 | Circlip | Carbon Steel |

| | | | | | | | | | | | | | |
|-----|------|------|------|------|------|------|------|------|------|------|------|-------|-------|
| DN | 15 | 20 | 25 | 32 | 40 | 50 | 65 | 80 | 100 | 125 | 150 | 200 | 250 |
| d | 15 | 20 | 25 | 32 | 40 | 50 | 65 | 80 | 100 | 125 | 150 | 200 | 250 |
| L | 115 | 120 | 125 | 130 | 140 | 150 | 170 | 180 | 190 | 325 | 350 | 400 | 450 |
| H | 78 | 113 | 107 | 113 | 130 | 146 | 176 | 222 | 300 | 325 | 350 | - | - |
| W | 130 | 160 | 160 | 160 | 250 | 250 | 350 | 350 | 400 | 600 | 600 | - | - |
| D | 95 | 105 | 115 | 140 | 150 | 165 | 185 | 200 | 220 | 250 | 285 | 340 | 405 |
| C | 65 | 75 | 85 | 100 | 110 | 125 | 145 | 160 | 180 | 210 | 240 | 295 | 355 |
| R | 45 | 58 | 68 | 48 | 88 | 102 | 122 | 138 | 158 | 188 | 212 | 268 | 320 |
| b | 14 | 16 | 16 | 18 | 18 | 20 | 20 | 22 | 24 | 26 | 26 | 30 | 32 |
| N-h | 4-14 | 4-14 | 4-14 | 4-18 | 4-18 | 4-18 | 4-18 | 8-18 | 8-18 | 8-18 | 8-23 | 12-23 | 12-27 |
| f | 2 | 2 | 2 | 2 | 3 | 3 | 3 | 3 | 3 | 3 | 3 | 3 | 3 |
| φ | 42 | 42 | 42 | 50 | 50 | 70 | 102 | 102 | 102 | 125 | 140 | 165 | 165 |
| 4-m | M5 | M5 | M5 | M6 | M6 | M8 | M10 | M10 | M10 | M12 | M16 | 20 | 20 |

Flange End Y Strainer



Note:

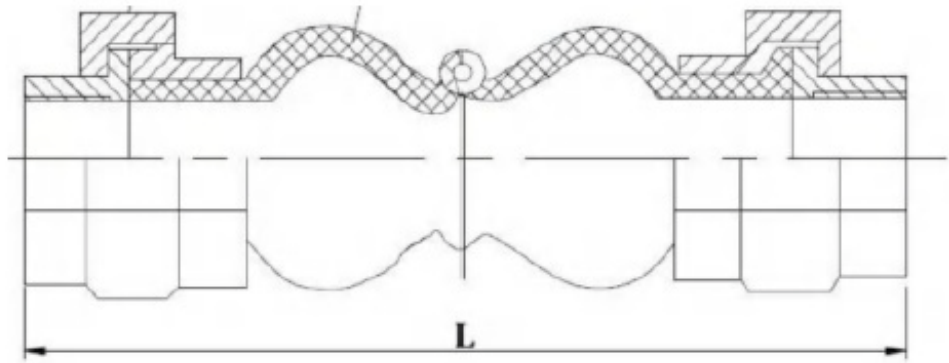
- 1. Flange dimensions: ASME B16.1/DIN 2533/BS 4504.
- 2. Face to face dimensions: ASME B16.10/DIN 3201.
F1/BS 2080.
- 3. Size up to 16".

Materials list:

| | | |
|---|------------|--------------------------|
| 1 | Body | Cast iron / Ductile iron |
| 2 | Bonnet | Cast iron / Ductile iron |
| 3 | Screen | Stainless steel |
| 4 | Gasket | Graphite |
| 5 | Screw Plug | Ductile iron |
| 6 | Bolt | Carbon steel |

| DN | L | D1 | D | b | Z-d |
|-----|-------|-------|-------|------|-------|
| 50 | 225.4 | 121 | 152 | 16 | 4-19 |
| 65 | 273 | 139.5 | 178 | 17.5 | 4-19 |
| 80 | 292 | 152.5 | 190 | 19 | 4-19 |
| 100 | 352 | 190.5 | 228.6 | 24 | 8-19 |
| 125 | 416 | 215.9 | 254 | 23.8 | 8-22 |
| 150 | 470 | 241.5 | 279 | 25.4 | 8-22 |
| 200 | 543 | 298.5 | 343 | 28.6 | 8-22 |
| 250 | 660.4 | 362 | 406 | 30.2 | 12-25 |
| 300 | 762 | 432 | 483 | 31.8 | 12-25 |

Rubber Expansion Joint



Note:

1. Working Temperature:0-100 °C
2. Working pressure: 1.6Mpa.
3. Shell pressure test pressure :2.4Mpa.
4. The carbon steel flange standard can be according

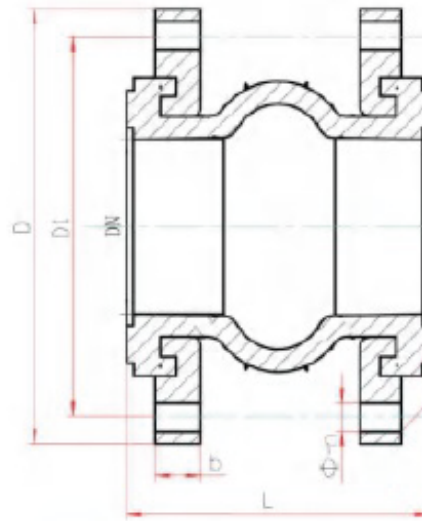
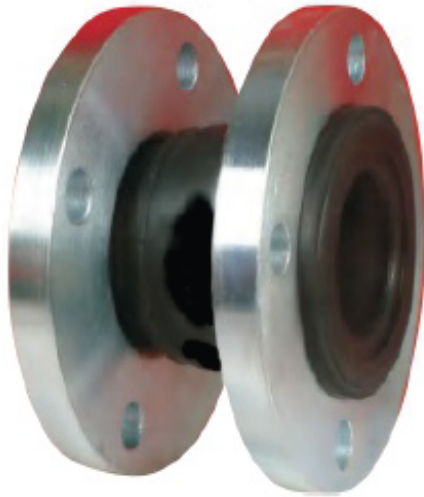
with customer request to change JIS10K, ANSI 150#,DIN and BS

Materials list:

| | | |
|---|--------------------|-------------------------|
| 1 | Flange | Galvanized Carbon Steel |
| 2 | Reinforcing Ring | Carbon Steel |
| 3 | Rubber | EPDM |
| 4 | Reinforcing Fabric | Nylon Fabric |

| SIZE | | L |
|--------|----|-----|
| INCH | DN | |
| 1/2" | 15 | 203 |
| 3/4" | 20 | 203 |
| 1" | 25 | 203 |
| 1-1/4" | 32 | 203 |
| 1-1/2" | 40 | 203 |
| 2" | 50 | 203 |
| 2-1/2" | 65 | 265 |
| 3" | 80 | 285 |

Rubber Expansion Joint



Note:

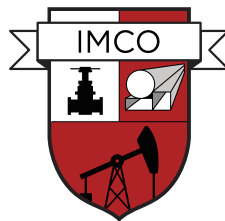
1. Working Temperature: 0-100°C
2. Working pressure: 1.6Mpa.
3. Shell pressure test pressure :2.4Mpa.
4. The carbon steel flange standard can be according with customer request to change JIS10K,ANSI 150#,DIN and BS

Materials list:

| | | |
|---|--------------------|-------------------------|
| 1 | Flange | Galvanized Carbon Steel |
| 2 | Reinforcing Ring | Carbon Steel |
| 3 | Rubber | EPDM |
| 4 | Reinforcing Fabric | Nylon Fabric |

| SIZE | | L |
|--------|-----|-----|
| INCH | DN | |
| 1-1/4" | 32 | 95 |
| 1-1/2" | 40 | 95 |
| 2" | 50 | 105 |
| 2-1/2" | 65 | 115 |
| 3" | 80 | 135 |
| 4" | 100 | 135 |
| 5" | 125 | 165 |
| 6" | 150 | 180 |
| 8" | 200 | 205 |
| 10" | 250 | 240 |
| 12" | 300 | 260 |
| 14" | 350 | 265 |
| 16" | 400 | 265 |
| 18" | 450 | 265 |
| 20" | 500 | 265 |
| 24" | 600 | 265 |

IMCOPIPES FZ LLC



We serve the world

IMCOPIPES FZ LLC, Compass Building, Al Shohada Road,
Al Hamra Industrial Zone, Ras Al Khaimah, United Arab Emirates
VAT No.: 104379977200003

IMCO TRADING GROUP LTD, Suite 2, 179 North End Road, London, W14 9NL, United Kingdom.
VAT No.: GB 422177419

Tel: +44 (0) 208 088 4690

E-mail: sales@imcopipes.com

